



Hull Campus

**Higher Education** | 2012 Entry

**Part of the Hull College Group**

Hull College Group is the trading name of Hull College



Welcome, we are delighted that you are considering studying with us. Hull College is a large college which offers further and higher education opportunities in the heart of the

city of Hull. It has one of the largest HE provisions within an FE College in the UK.

With an ambitious agenda for the future, Hull College offers you a highly reputable learning experience rooted in a vibrant and growing city.

Some 2500 students study on our undergraduate and postgraduate courses. This makes us one of the largest college providers of higher education in the UK. It also means that we are big enough to provide the very best teaching facilities. At the same time we are small enough to ensure that our students receive the level and quality of individual support which they need.

The College has recently opened a dedicated Higher Education Centre which is the hub of all our HE activity. It currently houses state of the art work stations, chill out areas and refreshment stations. Hull College is also launching a vibrant alumni association, allowing students past and present to stay part of our vast community.

The College has an impressive record and is nationally recognised for its quality delivery. Our growing Higher Education provision includes a wide choice of Foundation Degrees, BA Hons Degrees and MA Degrees in many specialist subjects. Our College is proud of its national Beacon status and we hold TQS with Excellence in Freight Logistics and Warehousing, Engineering and Children's Workforce Development.

We maintain very close links with national, regional and local businesses to ensure that our courses are closely aligned with the current and future needs of the economy, supporting our students to secure career opportunities. The College's record of employer engagement is exemplary. Opportunities for work placements are extensive with employer projects leading to many students achieving national recognition and awards.

Our students have a great record of academic achievement and recognition in international and national competitions and when you join us you can be sure that we will challenge and support you to go on to even greater things!

Our facilities are excellent and, with our moodle system, students can access their course resources online, anytime, anywhere.

You will find that our teaching staff are well qualified, experts in their field and committed to help you to realise your potential. Many have national and international reputations as practitioners and teachers.

Most recently we have launched the Net315 Project which offers enterprising students the tools and support they need to start their own businesses. The project employs a dedicated team who can offer advice and support. There is also a specialist area where students and budding entrepreneurs can use facilities. Students can benefit from topical workshops, legal and financial support, access to the College's state of the art facilities plus working with a range of industry professionals.

I am very proud of our College and its facilities.

I hope that you choose one of our higher education courses to continue your studies and I wish you every success.

**Dr Elaine McMahon CBE**  
**Hull College Chief Executive and Principal**

## Campus Information

Based within the heart of a bustling city, each Hull College centre boasts specialist facilities to support the learning opportunities that are available on the site.

The Queen's Gardens centre is the College's largest site and includes the impressive Horncastle building. Here you will find excellent facilities for Media and Performing Arts including a 200 seat working theatre that hosts performances for students and the public throughout the year.

The Energy and Climate Centre and the Architecture Hub based at the Queen's Gardens site offers professional renewables and architectural programmes and business facilities.

The Hull School of Art & Design building is a first choice environment for embracing a vast selection of creative disciplines.

The Cannon Street Centre, close to Queen's Gardens offers automotive training at a higher level within a purpose built facility for motor vehicle studies.

The Learning Zone, based within the prestigious Kingston Communications Stadium, has fantastic learning facilities for full-time sport and leisure courses. The Learning Zone also includes a public library, run in partnership with Hull City Libraries, with Internet access, a café and the popular Scholars Gym and Studio.

Maps showing the locations of all College sites can be found at the back of this prospectus. Visit [www.hull-college.ac.uk/he](http://www.hull-college.ac.uk/he) for more information.

There are also additional opportunities to study Higher Education at our Harrogate campus. Visit [www.harrogate.ac.uk/he](http://www.harrogate.ac.uk/he) for more information.

### Higher Education Partnerships



# Contents

	Page No.	Full Time	Part Time
MA Visual Arts	12	•	•
MA Design	12	•	•
MA Media and Communications	12	•	•
BA (Hons) Architectural Design	13	•	•
Foundation Degree 3D Design Crafts	14	•	•
BA (Hons) 3D Design Crafts	14	•	•
BA (Hons) Contemporary Fine Art Practice	15	•	•
BA (Hons) Illustration	15	•	•
Foundation Degree Graphic Design	16	•	•
BA (Hons) Graphic Design	17	•	•
BA (Hons) Animation	18	•	•
Foundation Degree Art and Design in the Public Realm	18	•	•
Foundation Degree Costume Design and Interpretation	19	•	•
Foundation Degree Fashion Design and Interpretation	20	•	•
Foundation Degree Textiles	20	•	•
BA (Hons) Applied Creative Design - specialist pathways in Costume, Fashion, Textiles and Art & Design in the Public Realm	21	•	•
Foundation Degree Lens Based Photo Media	21	•	•
BA (Hons) Lens Based Photo Media	22	•	•
Foundation Degree Digital Media Journalism	22	•	•
BA (Hons) Interactive Media	23	•	•
BA (Hons) Television and Film Design	24	•	•
BA (Hons) Web Design	25	•	•
BA (Hons) Games Design	25	•	•
Foundation Degree Musical Theatre	27	•	•
BA (Hons) Musical Theatre	27	•	•
Foundation Degree Stage Management and Technical Theatre	28	•	•
BA (Hons) Stage Management and Technical Theatre	29	•	•
Foundation Degree Acting	30	•	•
BA (Hons) Acting	30	•	•
Foundation Degree Dance	31	•	•
BA (Hons) Dance	31	•	•
Foundation Degree Broadcast Media	32	•	•
BA (Hons) Broadcast Media	32	•	•
Foundation Degree Music Performance	33	•	•
BA (Hons) Music Performance	34	•	•
Foundation Degree Music Production	35	•	•
BA (Hons) Music Production	35	•	•
Foundation Degree Business and Management	37	•	•
Foundation Degree Business and Management (Part-time)	37	•	•
Foundation Degree Business and Management	37	•	•
BA (Hons) Business and Management	38	•	•
Foundation Degree Computing: Business Information Technology	38	•	•
BSc (Hons) Computing	39	•	•
Foundation Degree Computer Network Management	39	•	•
BA (Hons) Education and Professional Development	40	•	•
Certificate in Education	41	•	•
Certificate in Education (Lifelong Learning)	42	•	•
Professional Graduate Certificate in Education	42	•	•
Professional Graduate Certificate in Education (Lifelong Learning)	43	•	•
Professional Graduate Certificate in Education	43	•	•
Foundation Degree Ports and Logistics	45	•	•
Foundation Degree Express Logistics	45	•	•
CMI Level 5 NVQ Diploma in Management (QCF)	46	•	•
CMI Level 7 NVQ Diploma in Management (QCF)	47	•	•
CMI Level 7 Diploma in Strategic Management and Leadership (QCF)	47	•	•
CIPD Diploma in Human Resource Practice	47	•	•
BSc(Hons) Construction Management	49	•	•
Foundation Degree Construction Management	49	•	•
BTEC HNC Diploma Construction and the Built Environment	50	•	•
Foundation Degree Construction Project Management	51	•	•
Foundation Degree Automotive Technology	51	•	•
Foundation Degree Engineering Technology	53	•	•
BEng (Hons) Engineering Technology	53	•	•
BA (Hons) Counselling Practice	55	•	•
Foundation Degree Working with Young People	55	•	•
Foundation Degree Young Children's Learning and Development	56	•	•
BA (Hons) Young Children's Learning and Development	57	•	•
Foundation Degree Sport Studies	59	•	•
Foundation Degree Travel and Tourism Management	60	•	•
Foundation Degree Crime and Community Safety	61	•	•
Foundation Degree Criminology with Applied Social Science	62	•	•
BA (Hons) Criminology	62	•	•

## Hull School of Art & Design (HSAD) Open Events

Date	Site	Time
Saturday 10th December 2011	HSAD	12-2 pm
Thursday 26th January 2012	HSAD	2-4 pm
Wednesday 29th February 2012	HSAD	2-4 pm

## Hull School of Performance Arts (HSPA) Open Events

Date	Site	Time
Saturday 10th December 2011	Horncastle Building	12-2pm
Thursday 26th January 2012	Horncastle Building	2-4pm
Wednesday 29th February 2012	Horncastle Building	2-4pm
Saturday 31st March 2012	Horncastle Building	11am-2pm

## Faculty of Business and Science Open Events

Date	Site	Time
Tuesday 10th January 2012	All sites	5-8pm
Thursday 8th March 2012	All sites	5-8pm
Saturday 16th June 2012	All sites	10am-2pm

## Course Areas:

Hull School of Art & Design	10-25
Hull School of Performance Arts	26-35
Business and Professional Development	36-49
Construction and Engineering	48-53
Counselling and Working with Young People	54-57
Sport, Criminology and Travel and Tourism	58-63

If you think you know about Hull, think again. One of Yorkshire's key cities, Hull, has transformed itself over the last five years and has been described as a gem in Yorkshire's magnificent crown.



# Student Life

Whether you are looking for a great place to shop, somewhere to eat, relaxing activities or enjoyable attractions, Hull has a choice of pastimes to keep you busy.

Hull has a range of venues and stadia including Hull Truck Theatre, Hull New Theatre and Hull City Hall which attract the best in musicals, opera, ballet, drama and one night performances. Hull Truck has an outstanding reputation, pushing the boundaries of contemporary theatre as well as offering opportunities for touring, education and community work and new writing.

If you like shopping and are looking for outlets, Hull has a diverse range of shops to make it an experience to remember. Retail heaven for the discerning shopper, the region has an abundance of designer outlets, glamorous boutiques, quirky independents, vintage arcades and high street stores.

If you prefer something a little more cultural, Hull has a group of 8 museums offering free entry. Hull's unique Museums Quarter - consisting of Wilberforce House, Hull and East Riding Museum, Street life and the Arctic Corsair trawler are a unique way to start your discovery of historic Hull.

Like sport? The City has the magnificent KC Stadium, home to Hull City football club and also the super league rugby club Hull FC. The Hull Arena is home to the Stingrays, the elite Ice Hockey league which also runs many public sessions if you fancy trying ice skating for yourself.

Hull also has a large variety of bars and restaurants. Based all over the City in a choice of areas including Newland Avenue, Princes Avenue, and Old Town to name but a few. With a range of restaurants ranging from Italian, Indian, Chinese, Thai and Malaysian, you will not get bored of trying new cuisine here.



[www.hull-college.ac.uk](http://www.hull-college.ac.uk)





### **Access to Learning Fund\***

Additional help may be available through the College. Full-time and part-time students (studying at least 50% of a full-time course) in the following groups will be treated as a priority for help:

- Students with children, especially lone parents
- Mature students, especially those with existing financial commitment
- Students from low income families
- Students with disabilities
- Students who have been in care
- Students from foyers or who are homeless
- Students in their final year

\*Subject to confirmation

### **Full-time Programmes**

All applications for entry to full-time Foundation Degrees and BA (Hons) Degrees must be through the Universities and College Admissions Service (UCAS).

Courses in the UCAS Scheme are listed on the UCAS website. If you are not at school or have difficulty obtaining the literature the following contact details can be used:

UCAS, Rosehill  
New Barn Lane  
Cheltenham  
GL52 3LZ

Tel: 0871 4680468  
E-mail: [enquiries@ucas.ac.uk](mailto:enquiries@ucas.ac.uk)  
Applications should be made on-line at:  
**[www.ucas.ac.uk](http://www.ucas.ac.uk)**

The UCAS code for Hull College is H73

### **When to apply**

UCAS start receiving applications for 2012 from 1st September 2011. The final deadline for UCAS to receive your applications is 15th January of the year in which you wish to start your course. The UCAS deadline for the receipt of applications for art and design courses is 24 March (except those listed with a 15 January deadline).

As places for popular courses are very competitive it is advisable to submit your application form before the deadline date.

Late applications will be considered if suitable vacancies remain on your chosen programme. The College will also take further applicants through the clearing process for any full-time courses with places available.

### **Applicant's fee**

Each application form sent to UCAS must be accompanied by a fee. Full details for payment can be found on-line at **[www.ucas.com](http://www.ucas.com)** or in the UCAS Handbook.

Every care has been taken to ensure that all information is correct at the time of going to press (Nov 2011). Please confirm all details at the time of application. For up to date course information and any new programme developments please visit our website **[www.hull-college.ac.uk/he](http://www.hull-college.ac.uk/he)**

### **Part-time Applications**

For all part-time Higher Education programmes you should apply direct to Hull College or Hull School of Art and Design where applicable. Application forms and financial advice can be obtained by calling:

Information, Advice and Guidance Team:  
Tel: (01482) 598744

Or by downloading from our website  
**[www.hull-college.ac.uk/HE](http://www.hull-college.ac.uk/HE)**

## Fees & Finance 2012

The Government recently announced significant changes to higher education/undergraduate tuition fees from 2012. The Hull College Group has set its Higher Education fees at £6000 per year from 2012 for new full-time undergraduate students. This tuition fee applies to all new students who enrol on the first year of their course in September 2012.

The Hull College Group has worked hard to keep its proposed fees inline with the base levels proposed by Government, whilst ensuring that it continues to provide an excellent and high quality education experience for students.

HCUK offers a range of bursaries and scholarships to ensure that it continues to offer opportunities for students to benefit from higher education.

Existing students registered on Hull College Group undergraduate degree programmes will continue to pay the same fees as when they enrolled for the duration of their full-time course. Students that progress at HCUK to 'top-up' their Foundation Degree to Honours level will continue to pay the 2011 full-time fee (£2600) until they complete their honours studies.

If you have any questions about Higher Education student finance and support contact Student Services on 01482 598942.

### Part Time Fees

For part time fees please check Hull College's website for further details.

[www.hull-college.ac.uk](http://www.hull-college.ac.uk)

### Generous Higher Education Bursaries

A comprehensive range of financial support is available to Higher Education students at Hull College Group. The Group provides a generous bursary and scholarships, available to those eligible students studying full-time Foundation Degree and BA Hons courses.

For further information please contact our Student Services team on 01482 598942.



## Hull College Student Union

REPRESENT, DEFEND and EXTEND opportunities for all Hull College Group students

### The Hull College Student Union

The College is fortunate to have an active Student Union which hosts an annual 'Freshers Fair' for students at the beginning of the Autumn term. This event is designed as a first introduction to other student members and is supported by many external agencies, focussing on building your social networks, hobbies and interests, and health and wellbeing issues.

Social events are organised by the Union throughout the year, giving students an opportunity to participate in many activities, sporting events and external visits. Through the Student Union you can make your voice heard, locally and nationally, on issues that concern you.

Joining the Student Union will enable you to get a host of valuable discounts throughout the year using your NUS card.

### Accommodation

Hull College works in partnership with a number of commercial agencies and can help you find suitable accommodation. Please contact our Student Services team on (01482) 598744 for an information pack.



# Facilities

## Libraries/Learning Resource Centres

The College's libraries are well stocked with reading and learning materials to support your coursework. There is a wide range of CDs, books, videos, DVDs, newspapers and journals, as well as general interest and fiction titles. Study spaces, internet facilities and other electronic resources are also available. A team of helpful staff are happy to assist, including a dedicated HE Librarian. Further information about our services can be found at <http://library.hull-college.ac.uk>.

## Cafés and Restaurants

Open daytimes and evenings, the College's cafés and restaurant provide a fine selection of reasonably priced food and drinks. Charlotte's restaurant is a fully licensed, silver service restaurant open for staff, students and visitors.

## Hair and Beauty Salons

Hair and Beauty treatments are offered within the College's own modern, fully equipped training salons at excellent value for money. Students and members of the public are welcome to book within the modern industry standard salons for treatments. Open during term time only, the salons are accessible from Monday to Saturday, with late opening four nights a week.

## Scholars Gym and Studio at the Learning Zone

Scholars Gym and Studio is air conditioned and fitted with top of the range cardiovascular and resistance equipment. Qualified instructors are on hand to help you achieve a healthier lifestyle by developing your very own personal exercise programme. The mirrored studio with fully sprung floor is perfect for our exercise classes which include Spinning, Thai Boxing, Aerobics and Flexi-bars.

## Student Support

Hull College's friendly Information, Advice and Guidance Team is based within the Queen's Gardens site but also offers a service at all other College sites. Here you can find out information on all Hull College courses and receive financial guidance. The team offers advice on travel, working whilst you study and how to access personal support. The College also employs its own counsellors who can advise on personal matters. You can make an appointment to see a counsellor by contacting the IAG Team. Students who are interested in using the Student Support service do not have to make an appointment; they can simply call into the Student Support area in the College's Chesters Building between 10 a.m. and 4 p.m. weekdays.

## Childcare

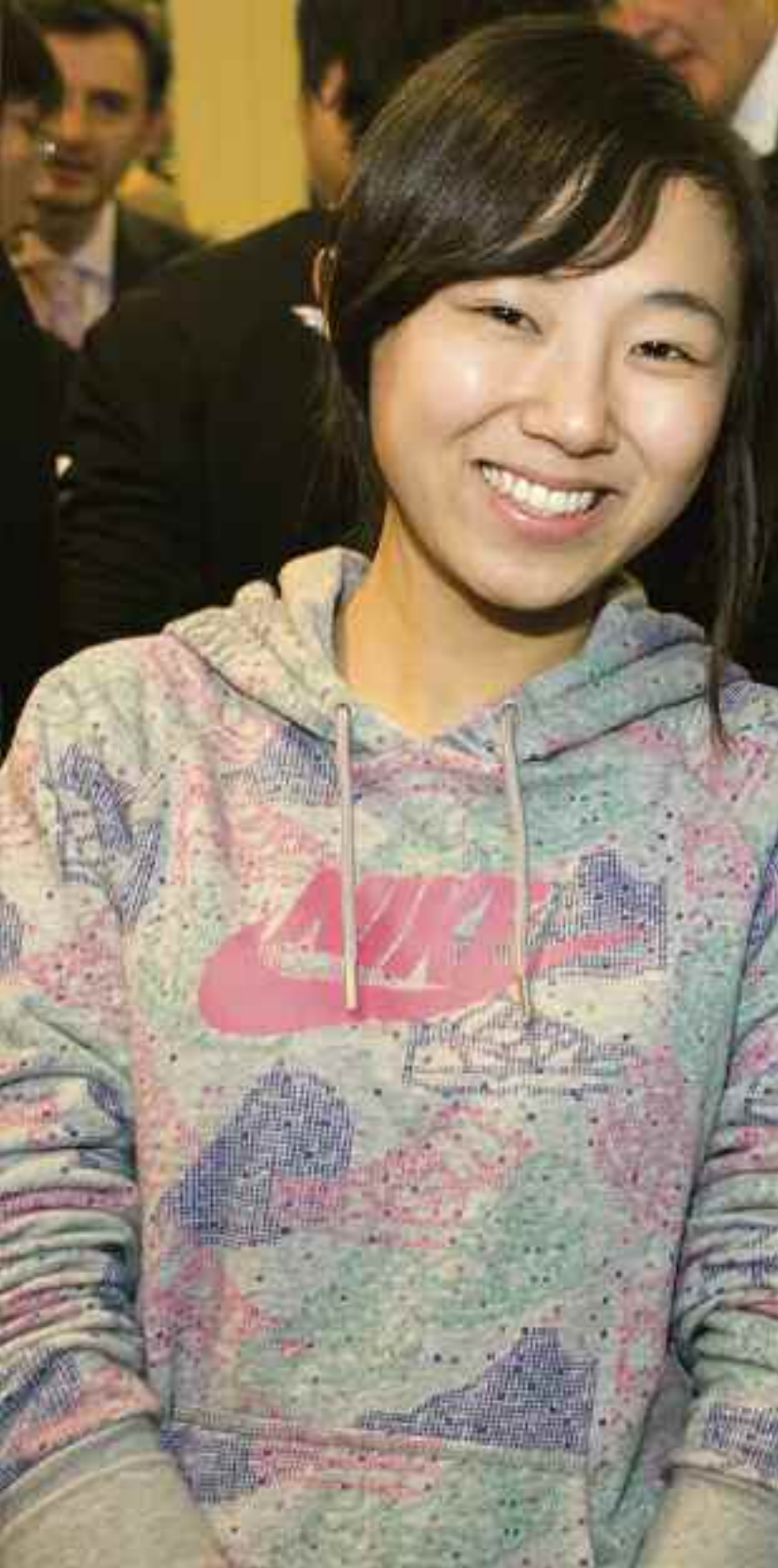
If you need childcare to enable you to study, look no further than one of the Hull College Childcare Centres. Fully qualified staff and centres that are OFSTED approved can offer stimulation and care of your child. All of our centres participate in the Government Nursery Grant initiative.

## The New HE Centre

As part of our commitment to providing outstanding facilities for our students, September 2011 sees the completion of our new HE Centre.

This dedicated area provides HE focused study and social areas, with access to our well stocked HE library.





# International students

Hull College Group has a long tradition of engaging with students from all over the world. Today, the Group has a growing number of international students. Hull College Group positively encourages the participation of international students and this support is embedded in our teaching and learning strategy.

## Costs

The Hull College Group charges highly competitive course fees for international study at a higher level. Check our website [www.hull-college.ac.uk/international](http://www.hull-college.ac.uk/international) for fee information.

## Scholarships and bursaries

Hull College Group offers attractive merit awards for international students on a competitive basis. Further details can be found by contacting the International Department:

E-mail: [international@hull-college.ac.uk](mailto:international@hull-college.ac.uk)

## Entry requirements

Hull College Group accepts qualifications from all over the world.

We use the NARIC system to obtain international qualification equivalencies. In addition to your academic qualifications, we also require evidence of your English language proficiency. We ask for a minimum score of 6.0 in the IELTS or TOEFL 550. We consider other evidence of English language proficiency. The Hull College Group also accepts mature students with relevant work experience as well as students wishing to transfer to the UK to complete their studies.

## How to apply

Applications can be made using the UCAS application system or by contacting the International Department directly:

E-mail: [international@hull-college.ac.uk](mailto:international@hull-college.ac.uk)

## Pastoral care:

The International Department provides a comprehensive welcome and induction programme for all international students.

Our induction programme provides new international students with the facility to open a UK bank account, police registration and health registration.

The International Department organises an annual New Year celebration as well as some short trips to nearby towns and cities. This will enable you to meet and interact with other international students at the College. The College, through its internal student support services, organise various events for all students of the College. International students are encouraged to participate in these events.

## Courses:

All full time courses are open to international student applications. Applications for part-time courses depend upon the applicants UK visa status.

## Contact:

For further information, specific to international students, please contact:

Tel: **(01482) 381921**

E-mail: [international@hull-college.ac.uk](mailto:international@hull-college.ac.uk)

Web: [www.hull-college.ac.uk/international](http://www.hull-college.ac.uk/international)

# Faculty of Arts



**HE** Hull School of **UK** Art and Design **HE** Hull School of **UK** Performance Arts

Hull School of Art and Design (HSAD) has been a highly regarded specialist centre since 1861 and this year we celebrate the one hundred and fiftieth anniversary of this exceptional school and the past and current achievements of its students.

HSAD provides high quality practice based programmes supported by critical and contextual studies for students studying up to masters level. Students are valued for the contributions they bring to this creative environment and we endeavour to support them with good base studios, well equipped workshops and committed teaching. We continually update our facilities and environment and maintain the ethos of a specialist art, design and media school for our staff and students to innovate and work in.

Hull School of Performance Arts (HSPA) was established in 1989 with just one course and is now respected throughout the region and nationally as a leading provider of Performance Arts training.

Performing Arts, Music and Media subjects are based in the iconic Horncastle building, which was purposely built to offer professional facilities and experience for students and professional artists alike, and has become the hub of the artistic centre community in Hull, providing some of the most prestigious facilities in the area with a fully equipped TV studio, radio and newsroom, recording and drama studios and the 200 seat Riverside Theatre.

# Hull School of Art and Design

## Student Success

### **Eita Lucy Hawksworth. BA (Hons) Illustration Young Creative Network Winner 2011.**

#### **Abby Wright. BA (Hons) Illustration.**

Abby has produced work for the prestigious Amelias Magazine and has worked for the V&A museum on various online magazines. Her work has recently been featured in Digital Arts and Digital Artist.

### **Hannah Tillison. Foundation Degree Fashion Design & Interpretation. Runner-Up 'Young Fashion Designer of the Year'.**

"I have really enjoyed the 2 years I have spent on the Fashion Design and Interpretation degree at HSAD and I have learnt a lot from it. I particularly enjoyed the client projects we took part in because they give you a better feel for what it is like to work within the industry.

We were encouraged to enter national competitions which linked into our studio work throughout the 2 years. This made the course more interesting. I chose to study at HSAD because I completed a BTEC course in Textile Design at the Park Street Centre which I thoroughly enjoyed and felt a natural progression would be to move onto here. I would highly recommend the course to anyone interested because the studios are open 5 days a week and you have your tutors there all the time unlike some larger universities, who only get to see their tutor once a week, it gives you a big advantage".

### **Nathan Pidd BA (Hons) Lens Based Photo Media. Fashion Photographer of the Year. Commercial Photographer of the Year.**

"During my time at Hull School of Art and Design my tutor Matt Winterlich constantly pushed me to new levels. I think the best aspect of HSAD is the fact that the tutors are well in tune with their specific subject areas and are there to help drive you to your goal. They keep themselves up to date with their practice and profession and are always there to inspire. With constant feedback and motivation, others and I have been able to go on and win Regional and National Awards for work created during our courses".

Previous to my time at HSAD I took up a degree course at University, this turned out to be a wrong choice for me. When I joined my course at HSAD I soon realised that the much smaller number of students meant you could receive more time with your tutor and gain better feedback, also creating a closer relationship with both your tutors and fellow class mates. This really made a difference to my confidence and quality of work.

Not only is the College well situated, it is also extremely comfortable to work in and is very well equipped (again in comparison to my university experience). Each unit of the course had its enjoyable points, but the fact that I had the freedom to follow my profession and passion in a superb working environment allowed my work to flourish".

### **Shamima Begum. BA (Hons) Applied Creative Design. Bridal Buyers Award Finalist.**

"During my three years of study I was always encouraged to push myself to the best of my abilities and go that bit further. Having worked with client briefs and competitions, the experience I have gained has taught me what it is to work to a professional standard in the industry. The amount of individual support given by the tutors really was amazing as they were always available to help and advise. It is this, along with the great creative freedom given which made Hull School of Art and Design such a successful environment to work in".

### **Mike Tierney. BA (Hons) Graphic Design. D&AD Award Winner**

"With the help of the tutors at HSAD I finished my final year with a First Class Honours and had a full time paid design job lined up as soon as I finished my course. I really can't thank them all enough for giving me the best start to my career in the creative industry. Good times ahead.

One of the main benefits about the courses at HSAD is that there are usually a small number of students per class compared to other colleges/universities meaning that if you need to speak to your tutor, you won't have to get in line.

The most enjoyable aspect of being part of the Hull School of Art and Design were the teachers and the way they pushed me to explore and break new boundaries in the creative industry, e.g. in my final two years of study I was heavily into video work so they urged me to make something new and creative. In doing so I won a D&AD award (the BIG yellow pencil) in London.

The thing that makes HSAD such a successful environment to work in is all down to the tutors. They are able to make each project fresh and exciting which makes the students want to work harder. One great thing about HSAD is all of the materials and equipment you could possibly want to use for a project are at hand, from printing processes like screen printing to large technical equipment... LIKE A £30,000 LASER CUTTER!!"

### **Fashion**

Hannah Tillison - Young Fashion Designer of the Year 2010 - Runner-Up

Sophie Marrow - Young Fashion Designer of the Year 2010 - Finalist

Shamima Begum - Bridal Buyers Awards 2010

### **Television & Film Design**

Ryan Braund, Sara-Jo Baugh, Chris Foster, Matt Hamby & Anthony Lockton - The Royal Television Society Awards - Undergraduate Fiction Winner 2009/10

### **Previous success stories:**

3rd year students commissioned by Red Gallery

2nd Year students - Public showing of work on the Hull Big Screen

Individual students exhibiting work at Artlink Gallery

Individual students undertaking a variety of professional commissions



# MA Visual Arts MA Design MA Media and Communications

An Award of Leeds Metropolitan University

## Duration

1 year (full-time)  
2 years (part-time)

## Location

Hull School of Art and Design

## Entry Requirements

Students accepted onto the programme will normally have achieved an upper second or first class Degree and be able to demonstrate high levels of motivation and professionalism at interview. Important to the interview process will be the submission of a suitable research project outline with the application.

## The Course

Hull School of Art and Design has re-established opportunities for postgraduate Masters level study in the creative area within Hull. The three Masters programmes in Design, Visual Arts and Media and Communications are designed to be studied via an individual project proposal.

Underpinning this individualised approach to research practice are lectures by visiting speakers, staff and research student led seminars, tutorials and access to excellent facilities and relevant practice space. The Masters research community will share a dedicated base room equipped with I/T facilities and have access to

"making" spaces relevant to their research. It is expected that the research community will share experiences, ideas and debate across programme boundaries. This interaction will be facilitated through access to the common base room.

There is some considerable importance placed upon the development of contemporary practice within an awareness of context and although innovative practice is at the heart of these programmes the research student will need to locate that practice in more global external contexts appropriate to the discipline.

## Progression

To employment and PhD study

## Additional Information

Applications will be looked for from graduates interested in either full or part time modes of study. Full time study is over one academic year of 45 weeks. Part time study is over two academic years of 45 weeks study each year. All students will need to commit to Wednesday afternoons and evenings as part of their study week. Students in the first instance should contact Hull School of Art and Design curriculum support office for details on how to apply for a place on a Masters programme.

# BA (Hons) Architectural Design

An Award of Leeds Metropolitan University

Full-time applications: Please apply via UCAS, code **K100**

Part-time applications: Please apply direct to Hull School of Art and Design.

## Duration

3 years (full-time)

5 years (part time)

## Location

Hull School of Art and Design

## Entry Requirements

Normally applicants will have a minimum of 200 UCAS Tariff points which should include qualifications in Maths and English at GCSE grades C or above. Other qualifications may include AS and A Levels, Foundation or National Diplomas in Art and Design or related subjects. Architecture is a design led subject and evidence of design ability will be looked for at interview usually via a portfolio of work. Mature students with non traditional qualifications are welcome to apply. Overseas applicants with equivalent qualifications and who can demonstrate use of English via an IELTS score of six or similar are also welcome.

## The Course

This programme is located in the specialist art and design facilities of Hull School of Art and Design (founded 1861). The architectural design programme was originally located in the Hull School of Architecture but now sits alongside other art and design programmes in HSAD. The previous programme established an international reputation for excellence and this revitalised course builds upon that success. The programme aims to develop highly creative and skilled graduates capable of making a contribution to architecture at national and international levels through exposure to current global social and economic perspectives coupled with the encouragement of individual professional practice. Many aspects of the programme are delivered by professional and practicing architects. Placement in an architects practice is an important feature of this new programme between part one and two of the qualification. At a time when Hull is undergoing significant regeneration as a city these placements will enable students to work in practice at an exciting time. This regeneration is expected to be prolonged and offer students and graduates real career opportunities. The programme itself maintains a healthy balance of creative thinking with practical skills acquisition. The School shares state of the art CAD systems with our construction centre of excellence which students will have access to. Programme content also includes the theory and history of architecture, architectural technology (structural design), environmental architecture (sustainable design) and construction and materials. Drawing is highly valued on the programme, both technical and freehand sometimes allied to 3 dimensional study, model making and CAD. Students will have access to a visiting lecturer programme and study visits including a self funded residential visit.

The course has been recommended for Candidate status for RIBA Part 1 exemption following the recent and very successful Exploratory Board visit. The recommendation is scheduled to go before the RIBA Education Board for ratification. Please keep an eye on our website for updates.

## Progression

The BA Hons can lead to further study at post graduate level at an institution of your choice or at our validating university, Leeds Metropolitan University.



# Foundation Degree 3D Design Crafts

## An Award of Leeds Metropolitan University

Full-time applications: Please apply via UCAS, Code **WW7F**

Part-time applications: Please apply direct to Hull School of Art and Design

### Duration

2 years (full-time)

2 years (part-time) extended academic year

### Location

Hull School of Art and Design

### Entry Requirements

Normally a minimum of 200 recognised UCAS points or equivalent which may include; A/AS level, Foundation Diploma in Art and Design or National Diploma programmes or equivalent qualifications. Applications from mature students with non standard qualifications will be considered on merit. Applications from overseas students with a minimum IELTS score of 6 are welcome. All applicants will need to demonstrate through interview and portfolio that they are ready to study a specialist higher education qualification.

### The Course

This programme is based within design crafts and allows specialisation in jewellery, silversmithing, ceramics or mixed media, including glass. An Award of Leeds Metropolitan University, In the early stages of the programme you will develop material skills in a range of experimental 3D areas and workshops. These workshop based activities will be complemented by a drawing module which will further develop your range of two-dimensional observation, expressive, design and visualisation skills. Critical and Contextual Studies (CATS) is an important part of this programme and will give you a broad understanding of crafts and relevant historical contexts. CATS will increasingly integrate with your own emerging specialist interests as you move through your study. Business and Professional Practice is a core element which will enable you to gain an insight into successful commercial operations as a design crafts person. The programme will be of interest to students who wish to make a career in design crafts and who want to embrace both the specialist and generic subject content of a programme that leads to professional practice as a crafts designer/maker.

### Progression

The Foundation Degree in 3D Design Crafts is mainly geared towards working as a crafts person upon graduation. There is also a BA (Hons) top up programme available in HSAD for progression purposes.

# BA (Hons) 3D Design Crafts

## An Award of Leeds Metropolitan University

Full-time applications: Please apply via UCAS, code **WW72**

Part-time applications: Please apply direct to Hull School of Art and Design

### Duration

1 year (full-time)

1 year (part-time)

### Location

The College's Park Street Centre

### Entry Requirements

There are progression opportunities from the Foundation Degree in 3D Design Crafts within Hull School of Art and Design, and also from other related disciplines such as Fine Art and Contemporary Applied Arts. The course also welcomes external applicants subject to relevant qualifications. There are no other courses offering this unique range of specialisms within this area.

### The Course

The course extends and further develops practical skills and critical thinking across 3D Design and Crafts. Students will be shown a rich and varied history of traditional and contemporary methods of working. Particular specialist skills in the following areas of study are covered traversing ceramics, glass, jewellery and silversmithing/ metalworking. Many skills across these areas have been lost through time as a result of mass production and cost implications. There is a demand for the originality of the one-off, unique piece as well as for the technical knowledge required to support factory/small unit production.

Graduates will emerge with designing and making skills relevant to commercial design practice and individual craft workshops. Practical studies link to modules covering art historical, theoretical and contextual studies. Relevant links to the workplace/live projects have been

built into the programme. There is a key focus on methods of production, origination of ideas and design development. The relevant technologies whether for production of work, craft orientated or alternative creative approaches will be offered. The ability to evaluate and present a critical view will be embedded in the course as well as the ability to promote and market work.

By the end of the course, graduates will be able to set up individual craft workshops with an understanding of funding possibilities such as bursaries from relevant awarding bodies e.g. crafts Council/Arts Council. They may work in an industrial/commercial context, gallery/museum curatorship and public/private commissions including sculptural installations such as commemorative work, murals, windows, architectural applications.

### Progression

BA (Hons) 3D Design Crafts provides students with the knowledge, understanding and skills required to enable progression to specialist postgraduate study within the school or elsewhere, to current or future employment, or to work on a freelance basis.

### Additional Information

For further information regarding this course please contact course leaders:

Nancy Pliener - Ceramics/Glass

Nicola Fidell Chapman -

Jewellery/Silversmithing/Metalwork

On 01482 598754 (Park Street

Reception) or email

Cso.parkstreet@hull-college.ac.uk

# BA (Hons) Contemporary Fine Art Practice

## An Award of Leeds Metropolitan University

Full-time applications: Please apply via UCAS, Code **W100**.  
Part-time applications: Please apply direct to Hull School of Art and Design.

### Duration

3 years (full-time) or 4 years (part-time)

### Location

Hull School of Art and Design

### Entry Requirements

Normally a minimum of 200 UCAS points or equivalent which may include; A level, AS and GCSE or equivalent qualifications, Foundation Diploma in Art and Design or National Diploma. Applicants with non-standard qualifications or mature students will be considered on merit. Applications from overseas students with IELTS score of 6 are welcome. All applicants will need to demonstrate by portfolio and interview that they are ready for specialist higher education study.

### The Course

This programme will suit students who have a strong and well developed interest in fine art based activity. After a short introductory period and an introduction to various workshop and media processes, students will be encouraged to develop their own fine art practice. This practice may be of an interdisciplinary nature where work is possible across photography, film, video, installation and electronic imaging, or in the more traditional areas of painting, sculpture, printmaking and drawing. We encourage applications from students whose practice is already established within a discipline or those who wish to explore more broad based study. Both approaches are valued and supported by the staff team. Students are expected to develop a strong understanding of the critical debate surrounding contemporary art practice, philosophy and contexts. Critical evaluation and reflective skills will be encouraged, and knowledge will be developed through theoretical and contextual study modules. Visiting lecturers will contribute significantly to this programme and provide insights into professional practice and current ideas. Students will be able to participate in residential visits which are self funded and will normally have exhibiting opportunities in external venues. Students enjoy generous personal studio space and access to a wide range of facilities.

**Students studying on this programme will have opportunities for study visits / summer school in historic Cyprus in partnership with Cyprus College of Art.**

### Progression

This will be dependent on individual aspirations and direction but may include post graduate study, fine art practice, lecturing or community arts work. Students also gain employment in other related fields e.g. galleries, theatres and arts organisations etc.

# BA (Hons) Illustration

## An Award of The University of Lincoln

Please apply via UCAS, code **W220**.  
Part-time applications: Please apply direct to Hull School of Art and Design.

### Duration

3 years (full-time)  
A part-time study mode is also available

### Location

Hull School of Art and Design

### Entry Requirements

Normally a minimum of 200 points or equivalent which may include; A level, AS and GCSE qualifications, Foundation Diploma in Art and Design or National Diploma programmes or equivalent qualifications. Applications with non-standard qualifications or mature students will be considered on merit. Applications from overseas students with IELTS score of 6 are welcome. All applicants will need to demonstrate by portfolio and interview that they are ready for specialist higher education study.

### The Course

The art form of illustration is an exciting and constantly changing one. Illustrators have to be aware of fluctuating fashions and the demands of the illustration industry. This programme includes several opportunities for students to engage with external projects and people. The course is progressively individually oriented following the acquisition of knowledge and the fundamental visual literacy skills developed throughout year one. Projects explore the divergent contexts of conceptual, character and narrative illustration in communicating ideas. Drawing from the imagination and from observation, plays a key role in this programme and life drawing is also accessible to all students who wish to extend their skills through formal sessions.

In the final year students are encouraged to develop a more individual style and illustrative content to suit emerging career directions. Cross-disciplinary activity in the third year is motivated by individual interests and leads to greater diversity of illustration work. The adjacency of base studio provision for illustration, graphic design and TV and film students fosters the kind of interdisciplinary work that is valued in creative industries.

Illustration students have access to a wide range of resources and facilities, including libraries, 3D workshops, digital design, printmaking, animation, life drawing and photography areas. A key feature of this programme is the ability to work flexibly across media boundaries from the secure base studio environment which all students enjoy. Contact with live projects, competitions and opportunities for external shows locally and in London, provide experience of professional practice. All students have access to our regular visiting lecturer events and self funded residential visits.

Students normally have enhancement opportunities in London via D&AD or New Designers. Students also have support in defining and developing their own web site.

### Progression

Graduates are well prepared to find work as freelance illustrators or employment in: advertising, publishing, specialist design and multimedia agencies.

# Foundation Degree Graphic Design

**An Award of Leeds Metropolitan University**

Part-time applications: Please apply direct to Hull School of Art and Design

## Duration

3 years (part-time)

## Location

Hull School of Art and Design

## Entry Requirements

Normally a minimum 200 UCAS points or equivalent which may include A or AS levels, Foundation in Art and Design Diploma, National Diploma or similar. Applications from mature students seeking progression within their present career or those looking to change their career will be considered on merit and non traditional qualifications can be waived for suitable applicants. All applicants will, at interview be able to demonstrate visual ability and commitment to higher education study and career progression. Overseas applicants will need to demonstrate ability in English through an IELTS score of six or equivalent.

## The Course

The programme has been developed through consultation with the local design industry to provide a vocationally relevant opportunity for those working in the design area to progress to a qualification which will enhance current career prospects. It is also designed to support those individuals making career change decisions to move into the industry or those seeking career progression within their present organisations. The course will require a mix of college and home based study on a part time basis with, where possible, work related practice contributing to the award. Programme content will include:-

- Visual Studies including drawing and design
- Ideas, Origination and Creative Thinking
- Problem Solving and visualisation skills development
- Critical and Contextual Study
- Business and Professional Practice
- Digital Design and Imaging
- Client and Personal Presentation Skills.

Design areas broadly covered within the programme are, editorial design, design for print media, package design, typography and art direction. The programme will include the opportunity to work on client briefs and external competition work.

## Progression

This programme is designed for those wanting to progress a career in the design industry but opportunity to study further towards a BA Hons qualification is available within HSAD for suitable candidates applying for an advanced entry point to the degree.

# BA (Hons) Graphic Design

## An Award of The University of Lincoln

Please apply via UCAS, code **W215**.

Part-time applications: Please apply direct to Hull School of Art and Design.

### Duration

3 years (full-time)

A part-time study mode is also available

### Location

Hull School of Art and Design

### Entry Requirements

Normally a minimum of 200 points or equivalent which may include; A level, AS and GCSE qualifications, Foundation Diploma in Art and Design or National Diploma programmes or equivalent qualifications. Applications with non-standard qualifications or mature students will be considered on merit. Applications from overseas students with IELTS score of 6 are welcome. All applicants will need to demonstrate, by portfolio and interview that they are ready for specialist higher education study.

### The Course

This programme produces graduates who fully understand the purposes, processes and products of graphic communication. A wide range of media is available to the modern practitioner and is fully explored on the programme including drawing, assemblage, printmaking, photography, video, computing, multimedia and typography.

Level 1 - Gives an overview of graphic design and includes sampling, basic principles and skills. The theme for this period is orientation; an understanding of the scope of design, what it can achieve and its place in the world. An appreciation of heroes and influences is gained through exposure to well regarded design and designers, whilst the ability to comment on such work is developed through debate and discussion. The first semester, in particular, is concerned with orientation in

terms of pastoral care, allowing for a period of settlement, adjustment and life in a new environment.

Level 2 - Continues the journey into the language, culture and science of graphic design and communication; the underlying theme for Level 2 is experimentations. The foundation of Level 1 is reinforced with a deeper understanding and a questioning of the laws and conventions of communication, allowing experimentation that is informed and rationalised. Ethical, cultural and social responsibilities form part of the debate surrounding graphic design and self-initiated work is introduced in preparation for the final year.

Level 3 - Allows students to consolidate the views, skills and abilities gained in Levels 1 and 2 and fosters the development of high level professional skills. Personal views and passions are demonstrated through self-initiated and negotiated study. Involvement with national and international competitions lend credibility and possible recognition to the portfolio. Emphasis is given to preparation for employment, the use of professional and critical language and self-motivation. There are self funded visit opportunities abroad and exhibiting possibilities at D&AD (Design and Art Direction) in London where recently students have achieved success.

### Progression

The quality of the work produced on the course has achieved national recognition in professional journals and through competition successes. As a result employment prospects in the media industries are good and many graduates have secured positions with noted practitioners.



# BA (Hons) Animation

An Award of Leeds Metropolitan University

Please apply via UCAS, code **W615**

## Duration

3 years (full-time)

## Location

Hull School of Art and Design

## Entry Requirements

Normally a minimum of 200 UCAS tariff points or equivalent which may include A level, AS and GCSEs, Foundation Art and Design or National Diploma programmes or their equivalents. Applicants with non standard qualifications or mature students will be considered on merit. Applications from overseas are welcome and will require an IELTS score of six or an equivalent qualification. All applicants will need to demonstrate visual ability via portfolio and at interview to demonstrate that they are ready for entry at this level.

## The Course

HSAD programmes include both Media, Illustration and Film /TV and this animation programme sits well within this creative environment. Students on the animation programme will share some modules with other design areas where there are common interests. Animation is about the moving image and is a precise and efficient communication medium which can delight, sell, inform and persuade. Animation at its best has magic, can suspend disbelief and sometimes marry this to live action reality. The programme is firmly rooted in effective communication to an audience through narrative and graphic depth, utilising all the traditional drawing and contemporary digital methods important in exciting people and enticing them in to a world of story telling through visual and audio means. Animation products can serve the commercial world (for example advertising) and the art world (for example art movies). The course will provide a creative and technical environment in which students can gain a balanced understanding and knowledge of animation whilst developing creative vision within emerging contexts. Narrative structure, direction, performance knowledge, character development, layout, script, storyboard, 3D and 2D production values etc underpinned by a thorough cultural and theoretical understanding of film animation will all be covered on this programme. Students will develop the studio skills, production and post production techniques and studio management abilities to be able to professionally realise their stories and ideas.

## Progression

Students will graduate from this programme with a well defined sense of purpose and career direction and with the skills and versatility to be able to gain employment in the commercial world, work as artist animators or have the versatility to move into niche areas of animation activity. Students will also have the option to move into post graduate study or a PGCE.

# Foundation Degree Art and Design in the Public Realm

An Award of Leeds Metropolitan University

Full-time applications: Please apply via UCAS, code **W900**

Part-time applications: Please apply direct to Hull School of Art and Design

## Duration

2 years (full-time) or 3 years (part-time)

## Location

Hull School of Art and Design

## Entry Requirements

Normally a minimum of 200 points or equivalent which may include; A level, AS and GCSE qualifications, Foundation Diploma in Art and Design or National Diploma programmes or equivalent qualifications. Applications with non-standard qualifications or mature students will be considered on merit. Applications from overseas students with IELTS score of 6 are welcome. All applicants will need to demonstrate by portfolio and interview that they are ready for specialist higher education study.

## The Course

The rapidly developing area of creative thinking and design is key to the regeneration of our towns and cities. The course offers students opportunities to shape the creative and practical use of interior and exterior public buildings and spaces. Using materials-based or computer-aided design development, specialist areas include landscape, sculpture, furniture, interior products and spatial design in a range of public contexts.

Students develop a sound understanding of the relationship of art and design to social, commercial and environmental arenas and adopt an innovative approach to problem-solving.

Understanding environmental factors underpins the programme, along with the creative application of materials and sustainable futures. Students learn about the organisation and management of public realm work in a range of organisational settings. At HSAD, we work with a broad range of clients, producing design concepts which are related to industry needs. You will gain client liaison experience. Hull is undergoing a period of regeneration and students are involved in projects related to new developments. Students have been successful in a number of competitions and recently one of our students was named Northern Designer of the Year.

The programme will provide you with the creative, conceptual and practical skills and experience to work in this expanding area of art and design or to progress to top-up to a full honours degree within HSAD. Students will access the regular visiting lecturer programme and study visits, including self funded residential visits.

## Progression

Students who successfully complete the Foundation Degree in Art and Design in the Public Realm will be able to proceed directly onto the Art and Design in the Public Realm pathway of the BA (Hons) Applied Creative Design top up award. The Foundation Degree and the BA (Hons) programme are validated by Leeds Metropolitan University.

# Foundation Degree Costume Design and Interpretation

## An Award of Leeds Metropolitan University

Full-time applications: Please apply via UCAS, code **W451**

Part-time applications: Please apply direct to Hull School of Art and Design

### Duration

2 years (full-time) or 3 years (part-time)

### Location

Hull School of Art and Design

### Entry Requirements

Normally a minimum of 200 points or equivalent which may include; A level, AS and GCSE qualifications, Foundation Diploma in Art and Design or National Diploma programmes or equivalent qualifications. Applications with non-standard qualifications or mature students will be considered on merit. Applications from overseas students with IELTS score of 6 are welcome. All applicants will need to demonstrate by portfolio and interview that they are ready for specialist higher education study.

### The Course

This course is designed to allow students to specialise in all areas of Costume Design and Interpretation for theatre, television or film. An emphasis is placed upon the design and construction skills that the industry requires in relation to garments, millinery and accessories. Students will study pattern making and construction for costume through flat pattern cutting and modelling patterns on the stand. Teaching is also given in embellishment and construction skills in relation to period costume to enable construction techniques to be applied for the creation of both period and contemporary costume for theatre, film or television. Historical and contextual studies and business and professional practice are an integral part of the course. We are looking for enthusiastic and well motivated individuals who are interested in developing theatre, television and film industry skills. Opportunities exist within the programme for live project collaboration with BA Performing Arts staff and students within the School. There are also opportunities for external live projects from a diverse range of private, museums, theatre, television and film sources. Many students have worked with productions at the famous Hull Truck Theatre this year. Students have access to the regular visiting lecturer events and study visits including self funded residential visits.

### Progression

Students who successfully complete the Foundation Degree in Costume Design and Interpretation are able to proceed directly onto the third year of the BA (Hons) Applied Creative Design programme offered within the Hull School of Art and Design. The Foundation Degree and BA (Hons) programmes are validated by Leeds Metropolitan University. Students will have sufficient skills to be able to work effectively in the theatre, television or film industry or to set up their own practice as a designer / interpreter.



# Foundation Degree Fashion Design and Interpretation

An Award of Leeds Metropolitan University

Full-time applications: Please apply via UCAS, code **W230**

Part-time applications: Please apply direct to Hull School of Art and Design

## Duration

2 years (full-time) or 3 years (part-time)

## Location

Hull School of Art and Design

## Entry Requirements

Normally a minimum of 200 points or equivalent which may include; A level, AS and GCSE qualifications, Foundation Diploma in Art and Design or National Diploma programmes or equivalent qualifications. Applications with non-standard qualifications or mature students will be considered on merit. Applications from overseas students with IELTS score of 6 are welcome. All applicants will need to demonstrate by portfolio and interview that they are ready for specialist higher education study.

## The Course

The course is designed to allow for specialist work in fashion following an initial period of fundamental skills and knowledge based study. An emphasis is placed upon the design and construction skills that industry requires in relation to both garments and accessories. Study is centred around

modelling on the stand, pattern cutting and design, supported by the acquisition of skills in embellishment and construction techniques. Historical studies, contemporary practice and business, and professional practice are core modules on this programme.

We look for enthusiastic and well motivated individuals who are interested in developing industry standard skill and awareness. Students enjoy excellent personal construction facilities and shared resources in designated individual base studio and workshop areas. Students access visiting lecturer events, study visits and self funded residential visits.

## Progression

Students successfully completing the 2 year Foundation Degree are able to proceed to the third year of the BA (Hons) Applied Creative Design programme offered within the Hull School of Art and Design and validated by Leeds Metropolitan University. Students will also have sufficient skills to be able to work effectively in the industry or set up their own practice as a designer/maker.

# Foundation Degree Textiles

An Award of Leeds Metropolitan University

Full-time applications: Please apply via UCAS, code **W231**

Part-time applications: Please apply direct to Hull School of Art and Design

## Duration

2 years (full-time) or 3 years (part-time)

## Location

Hull School of Art and Design

## Entry Requirements

Normally a minimum of 200 points or equivalent which may include; A level, AS and GCSE qualifications, Foundation Diploma in Art and Design or National Diploma programmes or equivalent qualifications. Applications with non-standard qualifications or mature students will be considered on merit. Applications from overseas students with IELTS score of 6 are welcome. All applicants will need to demonstrate by portfolio and interview that they are ready for specialist higher education study.

## The Course

This practice based programme adopts a very broad based approach to textile design and making. In its early stages it supports students to acquire skills and knowledge relevant to designer makers which is underpinned by critical and theoretical studies. All students enjoy a base studio for their design work and facilities in print, knit, weaving, embroidery and mixed media adjacent to that base. As students progress through the programme, increasing independence results in students determining their own practice within one or more textile specialisms. Industry currency is ensured through consultation with employer advisors but at FdA level the importance of the designer/maker as versatile original thinkers and practitioners is important. Work experience with nationally recognised companies has been accessed by many undergraduates on this programme and usually most students will also participate in several live projects. The HSAD visiting speaker programme and foyer gallery shows, enhance the experience for our students. Student shows in recent years have demonstrated the breadth of outcomes that students are engaged with ranging from very commercial research through to installation based textiles art. Students have opportunities for self funded residential visits at home and / or overseas.

## Progression

Students successfully completing the 2 year Foundation Degree are able to proceed to the third year of a full Honours Degree such as the BA (Hons) Applied Creative Design (textiles pathway) programme offered within the Hull School of Art and Design and validated by Leeds Metropolitan University. Students will also have sufficient practical and personal skills to be able to work effectively in the industry or set up their own practice as a designer/maker.

## Case study

Hannah has had a very successful past year at Hull School of Art & Design, becoming the runner up in the Clothes Show Live Student Young Designer of the Year. She has just completed her Foundation Degree in Fashion Design and Interpretation.

"I first came to the College to do a BTEC in Textiles and then progressed onto the Foundation Degree. I chose HSAD because they offer specialist courses with excellent facilities. I originally started the FD in Textiles but quickly realised that this was not the right course for me, the school helped me transfer to the Fashion Design and Interpretation programme which has been brilliant – it has given me the opportunity to develop my love of fabric into end products. The studio space at HSAD is great and gives a real taste of the industry.

I want to ultimately have a career in the fashion industry and plan to get my BA (Hons) Degree in Applied Creative Design: Fashion and then an MA".

# BA (Hons) Applied Creative Design - specialist pathways in Costume, Fashion, Textiles and Art & Design in the Public Realm

## An Award of Leeds Metropolitan University

Full-time applications: Please apply via UCAS, code **W200**

Part-time applications: Please apply direct to Hull School of Art and Design

### Duration

1 year (full-time)

A part-time study mode is also available

### Location

Hull School of Art and Design

### Entry Requirements

Normally applicants will have successfully completed a Foundation Degree, HND or HNC programme in a related programme. Applicants with non standard experience and qualifications are welcome. All applicants will need to demonstrate by portfolio and interview that they are ready for specialist higher education study at an advanced level.

### The Course

This is a one year professional top up programme that enables students who have prior learning in design to continue to Honours Degree level. The course is designed to enable students to develop their own specialist knowledge and skills in costume, fashion or textiles pathways. Students will gain in depth knowledge and understanding of design, materials, structure and construction in their chosen field. Emphasis is placed on the development of independence as designers through transferable skills, technical competence and analysis and evaluation of design research. Critical reflection and commercial awareness is essential to emerging designers and is given emphasis on the programme. Students are encouraged to engage with industry through competitions, live projects, client led briefs and work placements such as GP and J Baker and Skopos. A dissertation forms an important element of this programme. Students attend the regular visiting speaker events.

All pathways begin with an induction which includes dissertation preparation and an introduction to business and professional practice and practical elements of the programme. An external visit forms part of this induction and students will usually have opportunities for a self funded residential visit at some stage in the programme. This visit may be overseas. Students have excellent access to specialist and cross school facilities and libraries. Many students have opportunities to showcase their work in London at New Designers and/or other local and national events and venues.

### Progression

Post graduate study via an MA or PGCE, or work in the industry and as freelance designers or designer/makers.

# Foundation Degree Lens Based Photo Media

## An Award of Leeds Metropolitan University

Full-time applications: Please apply via UCAS, code **W640**

Part-time applications: Please apply direct to Hull School of Art and Design

### Duration

2 years (full-time), or 3 years (part-time)

### Location

Hull School of Art and Design

### Entry Requirements

Normally a minimum of 200 points or equivalent which may include; A level, AS and GCSE qualifications, Foundation Diploma in Art and Design or National Diploma programmes or equivalent qualifications. Applications with non-standard qualifications or mature students will be considered on merit. Applications from overseas students with IELTS score of 6 are welcome. All applicants will need to demonstrate by portfolio and interview that they are ready for specialist higher education study.

### The Course

The Foundation Degree Lens Based Photo Media is based in the HSAD accommodation in the city centre, providing excellent studio, workshop and other facilities supporting a wide range of photo and digital media applications including video. Opportunities exist to explore image making using both traditional and contemporary technology, including several camera formats and digital technology. Students are encouraged to adopt a highly creative and individual approach whilst learning the skills necessary to explore their ideas. Theoretical Studies and Business Professional Practice support the practical studies. Live project work, work experience and simulated work experience supported by industry, maintain the programmes vocational focus. Students have access to the regular visiting lecturer events programme and study visits including a self funded residential visit. Live project, competition work, commissioned work and external shows enable students to perform professionally as practitioners.

### Progression

Further study directly to year three of a top up Honours Degree at the Hull School of Art and Design is available to successful Foundation Degree students. Graduates will leave the course with a portfolio that will showcase the skills necessary to work effectively in a relevant area of the photographic and digital media industries. Many graduates are successfully working as agency and free lance professionals and have had considerable success with British Institute of Photography competitions in recent years.

# BA (Hons) Lens Based Photo Media

## An Award of Leeds Metropolitan University

Please apply via UCAS, code **W641**

Part-time applications: Please apply direct to Hull School of Art and Design

### Duration

1 year (full-time)

A part-time study mode is also available

### Location

Hull School of Art and Design

### Entry Requirements

Normally successful completion of a Foundation Degree, HND or HNC programme. Applicants with non standard experience and qualifications are welcome. All applicants will need to demonstrate by portfolio and interview that they are ready for specialist higher education study.

### The Course

This one year programme will offer students who have completed a Foundation Degree or equivalent qualification the opportunity to top-up to BA (Hons) level by a further year of full time study. There are a range of approaches open to students and individual practice may be of an interdisciplinary nature working across photography, video, animation and electronic imaging or within a discreet specialism such as photography. We welcome applications from students whose work is either broad based or more discipline focussed, and the staff team value and support this diversity. The programme will enable the further development of technical skills alongside fostering an understanding of the critical debate surrounding contemporary lens based practice, philosophy and contexts. Critical evaluation skills will

be encouraged, and knowledge will be delivered through theoretical and contextual study modules. Students will be supported in determining the direction of their work through self-initiated study within negotiated units and to develop independence in their practice. The programme promotes professionalism through live commissions, contact with the industry and engagement with current practitioners. The acquisition of transferable skills applicable to the lens based sector and to postgraduate study is encouraged. The course is validated by Leeds Metropolitan University.

Visiting lecturers contribute significantly to the programme and provide insights into professional practice and current ideas. Study visits including self funded residential visits are available to students.

### Progression

This will be dependent on individual aspirations and direction but may include post graduate study or employment within the lens based sector. During the course opportunities for external exhibitions, commissioned work, competition and live projects help prepare students for work as professionals.

Hull College Group now offer Masters programmes (MA), MA Design, MA Media and Communications and MA Visual Arts (Hull Campus) and MA Image and Time Based Media (Harrogate campus).

# Foundation Degree Digital Media Journalism

## An Award of Leeds Metropolitan University

Please apply via UCAS, code **P500**

Part-time applications: Please apply direct to Hull School of Art and Design

### Duration

2 years (full-time)

A part-time study mode is also available

### Location

Hull School of Art and Design

### Entry Requirements

Successful completion of two A Levels or the EDEXCEL (BTEC) National Diploma is normally required, although consideration will be given for previous experience and mature students.

### The Course

The Foundation Degree in Digital Media Journalism is intended for those who aspire to become professional practitioners in the media and public relations industries, within the specialism of online journalism.

The journalism industry is increasingly dependent on digital production and on-line communication. Those wishing to enter the industry have a strong advantage if they possess the skills to create and produce digital content confidently. This programme has been developed after consultation with employers including the Press Association, the BBC, the BJTC and national and regional media organisations. The building of good writing and news-gathering skills is at the heart of the course, but you will learn all the skills you need to produce sound, image and video content for on-line publication. Throughout the course, you will have the opportunity to produce real products for our own on-line hyper local website and to work with local media industries on one-off projects or longer-term work experience.

Visits to media organisations are planned into the course, so that you understand the structure and potential job roles in today's media industries. As you progress through the course, there is an opportunity to specialise in areas such as music, sport, entertainment and news journalism, script, copy writing and blogging, as well as working for publications such as games magazines and listings and review publications. An exploration of media futures underpins an understanding of contemporary developments. You will explore communication studies so that your practical work is backed up by an understanding of the social, cultural and political context in which you are working. Throughout there is an emphasis on client led work, with opportunities for live briefs, placements and talks from visiting professionals. The programme is intensely practical, underpinned by academic understanding of the subject area, promoting creative, technical and thinking skills. It will prepare you for the exciting new job opportunities emerging in online media, either within media and PR organisations or as freelance practitioners. Good personal and professional presentation skills are highly valued. By the end of the course, you will have a high quality digital portfolio of your work to give you a good start in entering the job market.

### Progression

At the end of your study you will be able to continue in education with a 'top-up' BA (Hons) Degree, or pursue a career as a media practitioner. The skills attained during the course of study will also enable students to enter other avenues of employment.

# BA (Hons) Interactive Media

An Award of The University of Lincoln

Please apply via UCAS, code **W285**

## Duration

3 years (full-time)

## Location

Hull School of Art and Design

## Entry Requirements

Normally 5 GCSEs at Grade C or above (or equivalent), plus the equivalent of 200 points from a minimum of one 6-unit A level and two 3-unit AS levels.

## The Course

Electronic or "New" media is the future of design. The BA (Hons) Interactive Media course is broad based, exploring many different applications and platforms for Interactive Multimedia Design. The emphasis is on the making of artefacts and products that are "useable" or "experiential", on interfacing, communicating and participating. The course is delivered through studio based, student-centred, responsive teaching and learning, with excellent access to a wide range of digital production facilities. Course content encompasses broad based multimedia design, interface and information design, online magazine design, user oriented design, situated interaction design, gaming and experimental design. There is an emphasis on practical work with the extensive use and evaluation of current technologies. Visual design is of great importance but equal consideration is given to the conceptual and contextual basis.

Professional and Industrial Context: The course has strong links with both local and national companies, covering a wide range of interactive multimedia. The quality of work produced on the course has received recognition through extensive competition successes both in the UK and abroad, including a number of nominations for and winners of the top British Interactive Media Association Student Award, D&AD New Bloods award, Euripi UK winner and recognition in the Computer Arts graduate showcase. Students enjoy excellent facilities and interaction with other programme areas which operate in base studios adjacent to new media facilities.

## Progression

A wide range of employers, both local and national, actively seek to recruit those with design for digital media knowledge and skills. There are many employment opportunities within multimedia departments of advertising, publishing, and telecommunications companies; television companies; games companies; specialist interactive design and multimedia companies; research and development; and education and training. Our graduates have found excellent employment with a number of the leading organisations and agencies in the UK, including Cimex Media, the BBC and Magnetic North.

Masters study is available to suitable graduates.





# BA (Hons) Television and Film Design

An Award of The University of Lincoln

Please apply via UCAS, code **WW62**

## Duration

3 years (full-time)

## Location

Hull School of Art and Design

## Entry Requirements

Normally a minimum of 200 points or equivalent which may include; A level, AS and GCSE qualifications, Foundation Diploma in Art and Design or National Diploma programmes or equivalent qualifications. Applications with non-standard qualifications or mature students will be considered on merit. Applications from overseas students with IELTS score of 6 are welcome. All applicants will need to demonstrate by portfolio and interview that they are ready for specialist higher education study.

## The Course

This creative and practical course provides opportunities for you to explore 16mm filmmaking, digital video production and moving image design. You may choose to specialise or develop a broad range of skills, knowledge and abilities in the areas of:

- Visual storytelling: The art, craft and practice of fiction, documentary and experimental filmmaking.
- Moving Image Design: The conceptualisation, design and production of moving image work for the film and television industries, advertising, commerce and education.

The course is guided and influenced by the rapidly expanding and continually developing film and television communication industries. Emphasis is placed on creative origination, problem solving and the

expression of concepts and ideas. Areas of exploration include:

- Scriptwriting
- Directing
- Cinematography
- Production design
- Art direction
- Sound design and production
- Editing and post-production
- Digital imaging, manipulation and effects
- Animation
- Drawing, visualisation and storyboarding
- Titles and type in motion
- Branding, identity and promotion
- Project and Production management

Engagement with live client briefs, participation in national student competitions and networking with industry are an important part of the programme. Independent learning and negotiated study through self-initiated projects encourage and enable you to develop your own personal 'voice'.

## Resources and Facilities

- A wide range of film, HD and digital video cameras for single and multi camera productions and workshops.
- Flexible, well equipped production and post production studios, green screen facilities, photographic studios and construction workshops.

## Progression

Preparation for employment is a key feature of the course. Our graduates continue to gain employment successfully in a wide range of creative areas in Television programme making, independent film productions and the visual communications industries.

# BA (Hons) Web Design

An Award of The University of Lincoln

Please apply via UCAS, code **W281**

## Duration

3 years (full-time)

## Location

Hull School of Art and Design

## Entry Requirements

Normally 5 GCSEs at Grade C or above (or equivalent), plus the equivalent of 200 points from a minimum of one 6-unit A level and two 3-unit AS levels.

## The Course

The BA (Hons) Web Design is specifically targeted towards designing for online multimedia, facilitating a thorough exploration and understanding of web concepts. Emphasis is placed on creative origination, problem solving and consideration of commercial products and processes. There is much production work, with extensive use and evaluation of current technologies. The course is delivered through studio based, student-centred, responsive teaching and learning, with excellent access to a wide range of digital production facilities. Course content includes information architecture, usability, user centred design, interface and content design, navigation models and underlying technologies of the internet. The emphasis is on creativity and experimentation, culminating in the final year with a substantial piece of self initiated work complemented by commercially led briefs and professional practice.

Professional and Industrial Context: Links with national web design and "new media" companies provide an important professional dimension to the course. Competitions give valuable experience, and our students have had much success both in the UK and abroad, including a number of nominations for and winners of the top British Interactive Media Association student award, D and AD New Bloods award, European E-Magicians award, Europrix UK winner and recognition in the Computer Arts graduate showcase. Students enjoy excellent specialist facilities and interaction with students from other programme areas in the school. Students can also access the visiting lecturer events and study visits including self funded residential opportunities.

## Progression

A wide range of employers, both local and national, actively seek to recruit those with particular web design oriented knowledge and skills. There are many employment opportunities as visual designers, usability specialists, interface designers, as web designers/developers/directors/producers, as researchers, and as educators. Our graduates have found excellent employment with a number of the leading organisations and agencies in the UK, including Cimex Media, the BBC and Magnetic North. Progression directly into work from this programme is excellent.

# BA (Hons) Games Design

An Award of The University of Lincoln

Please apply via UCAS, code **W280**

## Duration

3 years (full-time)

## Location

Hull School of Art and Design

## Entry Requirements

Normally a minimum of 200 points or equivalent which may include; A level, AS and GCSE qualifications, Foundation studies in Art and Design or National Diploma programmes or equivalent qualifications. Applications with non-standard qualifications or mature students will be considered on merit. Applications from overseas students with IELTS score of 6 are welcome. All applicants will need to demonstrate by portfolio and interview that they are ready for specialist higher education study.

## The Course

The programme focuses on designing for computer games, which are the most visible forms of representation to involve what is known as interactivity, representing a convergence in both communications and entertainment media. Emphasis is placed on the design, rather than the technology, of computer games, exploring the notion of play in interactive digital media on all platforms within a conceptual framework called gaming. The course is delivered through studio based, student centred, teaching and learning, with excellent access to a wide range of digital production facilities. Course content

includes game play, genre and relationship to previous forms, interaction, screen design and conventions, narrative development, characterisation, level design, and their integration within the context of a non-linear game environment. Students will work towards producing working/complete games, and on games concepts for other platforms.

Professional and Industrial Context: Links with companies who are experienced in various different gaming applications provide an important professional dimension to the course. Competitions give valuable experience, and our students have had much success both in the UK and abroad, including a number of nominations for and winners of the top British Interactive Media Association student award, D and AD New Bloods awards, European E-Magicians award, Europrix UK winner and recognition in Computer Arts graduate showcase.

## Progression

Employers are seeking to recruit those with particular games design oriented knowledge and skills as games designers/developers/ directors/producers. Some will be employed to produce online games from concept to completion, others in companies creating PC or console games. Our graduates have found excellent employment with a number of leading organisations and agencies across the UK.

## Case study

Games Design Students working with the Hull Museums Service, subsequently featured as a Case Study at the V&A.

"The students were very professional in their approach to the brief. In the "real" world, the development of games-related products / films / artwork is a team effort and is assigned as a holistic approach to completing the commission. Therefore, I particularly admired the students approach to assigning tasks to individuals with key responsibilities for the overall development and the final product (a recreation of Hull's dock areas

c. 1900 using a game engine)."

"The recreation was a very popular exhibit in the Ink or Swim exhibition at the Ferens Art Gallery, as the historical context of Hull at the turn of the 20th century is a subject that local people generally love. The accentuated narrative, navigation, and overall contemporary interpretation of the dock's history will be a real asset to Hull Museum Education."

Adele Howitt, Education Project Officer Hull Museum Education



## Case study

### James - Performing Arts

Now working as a Technical Assistant Stage Manager at the Phoenix Dance Theatre, James achieved a BA Honors Degree in Technical Theatre and Stage Management at Hull College. James has always been interested in drama and theatre but knew he didn't want to pursue a career as an actor. The BA (Hons) in Technical Theatre and Stage Management at the College offered the perfect mix of technical skill and theory for him.

"When I was looking at what to do at degree level, I was searching for a course that fitted in with what I wanted to do long term and, after reading up on the course at Hull College it seemed to be the perfect thing for me. I loved the whole experience; the tutors and lecturers were very friendly and I would always be learning something new. The course equipped me with the knowledge and skills needed for my career. It also gave me a chance to network with important people in the industry."

# Hull School of Performance Arts

## Foundation Degree Musical Theatre

An award of Leeds Metropolitan University

Please apply via UCAS, code **WW34**

### Duration

2 years (full-time)

### Location

Hull School of Performance Arts

### Entry Requirements

Successful completion of two A Levels or the EDEXCEL (BTEC) National Diploma is normally required, although consideration will be given for previous experience and mature students.

### The Course

The Foundation Degree in Musical Theatre explores a range of practical and academic skills, competences and practices characteristic of the genre of musical theatre, whilst preparing the student for continuing their study at BA(Hons) level. It aims to provide the student with the opportunity to study the genre through significant performance experiences, a combination of facilitated, independent or directed productions that enable the student to consolidate general performance competences along with specific dance, singing and acting skills. The student will also develop their independent thinking skills applying critical analysis, reflection and evaluation to their own and others' performance and academic work - in preparation for the workplace or further study. The student will also attain knowledge and understanding of the historical, social and cultural contexts of the genre. Students will have the distinct advantage of working in their chosen specialist area developing practical skills with a range of internal and external practitioners. The programme will also

create a synergy between the different specialist routes, producing high quality major performance productions to a professional standard.

Year 1 core modules:

- Academic Skills and Techniques 1
- Performance 1
- Academic Skills and Techniques 2
- Performance 2

Year 1 Subject Specialist modules:

- Musical Theatre Practice
- Performance Contexts: Musical Theatre
- Musical Theatre Developmental Skills
- Production Processes: Scores and Scripts

Year 2 core modules:

- Academic Skills and Techniques 3
- Performance 3
- Academic Skills and Techniques 4
- Performance 4

Year 2 Subject Specialist modules:

- Connections: Techniques and vocabularies
- Embodying Technique: Music and lyrics as dramatic text
- Musical Theatre: Consolidating Technique
- Choreography for Musical Theatre

### Progression

At the end of your study you will be able to continue in education with a 'top up' BA (Hons) Degree Musical Theatre that runs for one year, pursue a career as a performer or move into related employment areas.

## BA (Hons) Musical Theatre

An award of Leeds Metropolitan University

Please apply via UCAS, code **WW3K**

### Duration

1 year (full-time)

### Location

Hull School of Performance Arts

### Entry Requirements

Normally a Foundation Degree, HND or a Diploma in Higher Education

### The Course

The Award aims to provide the student with the opportunity to study the genre through significant performance experiences, a combination of facilitated, independent or directed productions that enable the student to consolidate general performance competences along with specific dance, singing and acting skills. The student will also develop their independent thinking skills applying critical analysis, reflection and evaluation at honours level to their own and others' performance and academic work – in preparation for the workplace or continuing academic study. The BA (Hons) Musical Theatre Degree has been specifically designed to consolidate dance, singing and acting technique through technique class and also through performance projects and encourages students to become independent thinkers and makers of work in preparation for the work place or further study.

### Progression

BA (Hons) Musical Theatre provides the student with the opportunity for further study in the form of a post graduate degree, MA level or PGCE; entry into further professional training at a recognised stage school or employment opportunities in the performing arts or other creative industries is also possible.



# Foundation Degree Stage Management and Technical Theatre

## An award of Leeds Metropolitan University

Full-time applications: Please apply via UCAS, code **W440**

Part-time applications: Please apply direct to Hull College

### Duration

2 years (full-time) or 3 years (part-time)

### Location

Hull School of Performance Arts

### Entry Requirements

Normally you will need EDEXCEL (BTEC) National Diploma or two A Levels.

### The Course

The Foundation Degree Stage Management and Technical Theatre offers students the opportunity to work at degree level. The course is delivered through modules with students being introduced to a broad range of technical theatre styles: Lighting; Sound; Stage Management and Stagecraft. The modules incorporate opportunities to develop both academic and practical skills which prepare the student for the diversity of today's technical theatre profession. The technical theatre department within the College community support a wide variety of performance styles. This enables students to gain experience in many different areas.

#### Year 1 core modules:

- Work Related Learning One: Application of skills developed throughout the semester in an industry related context specialising in operational skills.
- Work Related Learning Two: Further Development of professional skills in industry applications specialising in management and craft based skills.
- Personal and Professional Development One: Development of theoretical skills in relation to the technical theatre industry's

position within the arts. Also development of study skills and personal portfolio development.

- Personal and Professional Development Two: Development of theoretical skills in relation to technical theatre's position within performing arts history. Development of personal skills and portfolio development.

#### Subject Specialist modules:

- Stage Management
- Stagecraft
- Lighting Practice
- Sound Operation and Design

#### Year 2 core modules:

- Work Related Learning Three: Practical application of skills within an industry context, specialising in areas of event management and lighting design.
- Work Related Learning Four: Application of professional skills in relation to a student's own specialism.
- Personal and Professional Development Three: Developing skills for studying performance and the presentation of research.
- Personal and Professional Development Four: Development of professional portfolio and preparation for a student's future within the industry.

#### Subject Specialist modules:

- Production Management
- Lighting Design
- Set Design
- Audio Visual Design

### Progression

BA (Hons) Stage Management and Technical Theatre at Hull College or other Higher Education Institutions.

# BA (Hons) Stage Management and Technical Theatre

An award of Leeds Metropolitan University

Please apply via UCAS, code **W441**

## Duration

1 year (full-time)

## Location

Hull School of Performance Arts

## Entry Requirements

Normally you need to have completed two years of study at Higher Education level in your specialist area.

## The Course

This course enables you to convert a relevant Foundation Degree or HND into a BA (Hons) by completing a third year of study. You will be given the opportunity to further develop skills within the framework of Stage Management and Technical Theatre. The emphasis is on developing a professional standard of work. The course is delivered through seminars and workshops which will cover a variety of technical theatre fields including Production Management; Lighting, Sound and Design. This will enable you to experience this versatile industry and gain valuable skills, which you will be able to take with you into the industry. The course is key within the performing arts community in the college and this allows for a great deal of practical application for you as a student. You will be given the opportunity to work alongside a great deal of different performance styles, as well as developing your own productions and projects. Overall the course is designed to prepare you for a diverse industry by giving you diverse skills.

## Core Modules:

- Personal Professional Development 5: Development of industry and personal skills.
- Personal Professional Development 6: Preparation for industry, through an understanding of the industry framework, interview skills and portfolio development.
- Work Based Learning 5: Practical application of industry skills, specialising in management and design elements.
- Work Based Learning 6: Application of specialisms within a professional framework.

## Subject Specialist modules:

- Creative Lighting Design
- Creative Sound Design
- Interactive Technology for Performance
- Production Management

## Progression

Employment opportunities include directing, production management, teaching, research or self employment. Some students decide to form their own production companies, become professional technicians or enter the educational sector. Careers advice is given by visiting lecturers, designers, college staff, and other professional practitioners working within the industry.



# Foundation Degree Acting

An award of Leeds Metropolitan University

Please apply via UCAS, UCAS code **W410**

## Duration

2 years (full-time)

## Location

Hull School of Performance Arts

## Entry Requirements

Successful completion of two A Levels or the Edexcel (BTEC) National Diploma is normally required, although consideration will be given for previous experience and mature students.

## The Course

The Foundation Degree Acting is an exciting new course that explores acting techniques which will 'train' the actor in practical aspects of performance. Students are taught modules which relate these practical training aspects to large scale productions which are either text based or created by the students. Students will also develop their independent thinking skills applying critical analysis, reflection and evaluation to their own and others performance and academic work - in preparation for the workplace or further study. The student will also attain knowledge and understanding of the historical, social and cultural contexts of the genre. Students will have the distinct advantage of working in their chosen specialist area developing practical skills with a range of internal and external practitioners. The programme will also create a synergy between the different routes producing high quality major performance productions to a professional standard.

Year 1 core modules:

- Personal Professional Development 1
- Personal Professional Development 2
- Work Based Learning 1
- Work Based Learning 2

Year 1 specialist modules:

- Movement
- Voice
- Theatre in Education
- Acting and Naturalism

Year 2 core modules:

- Personal Professional Development 3
- Personal Professional Development 4
- Work Based Learning 3
- Work Based Learning 4

Year 2 subject specialist modules:

- Contemporary Acting
- Classical Theatre
- Voice 2
- Devising

## Progression

At the end of your study you will be able to continue in education with a 'top up' BA (Hons) Degree in Acting, pursue a career as a performer or move into related employment areas.

# BA (Hons) Acting

An award of Leeds Metropolitan University

Please apply via UCAS, code **W411**

## Duration

1 year (full-time)

## Location

Hull School of Performance Arts

## Entry Requirements

Normally you need to have completed two years of study at Higher Education level (level 4 and 5) in your specialist area.

## The Course

Students have the opportunity to engage with external practitioners such as visiting directors and production companies. Recently students have taken part in a mediated performance with the production company, 'imitating the dog' and had excellent feedback on their work from visiting professional directors. Students have the opportunity to take work to Hull Truck theatre and have recently performed there as part of the opening season of the new theatre. There are opportunities to engage with a wide range of performance styles from established conventions to experimental forms. There is a balance of practical and academic work and students have described their experience as challenging and rewarding. There are opportunities to direct, devise and perform from an actor's

perspective, engaging in student-led performance work as well as staff directed productions. The programme consists of four core modules.

Core Modules:

- Personal Professional Development 5
- Personal Professional Development 6
- Work Based Learning Development 5
- Work Based Learning Development 6

Specialist Modules:

- The Actor as Practitioner
- Voice and the Actor
- Experimental Performance
- The Actor as Director

## Progression

Employment opportunities include acting, performance, directing, production management, teaching, research or self-employment. Some students decide to form their own production companies, become professional actors or enter the educational sector. Careers advice is given by visiting lecturers, college staff, and other professional practitioners working within the industry. This course also prepares students for post-graduate study.

# Foundation Degree Dance

An award of Leeds Metropolitan University

Full-time applications: Please apply via UCAS, code **W500**

Part-time applications: Please apply direct to Hull College

## Duration

2 years (full-time) or 3 years (part-time)

## Location

Hull School of Performance Arts

## Entry Requirements

Normally you will need an EDEXCEL (BTEC) National Diploma or two A Levels.

## The Course

The Foundation Degree Dance is a two year programme that offers students the opportunity to work at degree level. The course is delivered through modules with an emphasis placed upon the development of skills and knowledge that prepares the student for teaching, freelance work and small scale dance companies. The programme places importance in developing skills through work based projects and as such the student is provided with opportunities to work with major dance companies, for example, Northern Ballet. In addition, students develop their knowledge of developing dance through creating dance festivals, workshops and performances. As part of this programme second year students are provided with an opportunity to gain a City and Guilds teaching qualification.

### Year 1:

Each semester has a Personal Professional Development (PPD) and Work Related Learning (WRL) module- these focus upon creating a practical project. Dance Technique is delivered in both semesters - Jazz, Ballet and Contemporary Privileging Technology Choreography.

### Year 2:

Each semester has a PPD and WRL module- these focus upon creating a practical project. Dance Technique is delivered in both semesters- Jazz, Ballet and Contemporary Privileging Technology Choreography.

## Progression

BA (Hons) Dance top-up at Hull College or other Higher Education Institutions.

# BA (Hons) Dance

An award of Leeds Metropolitan University

Please apply via UCAS, code **W501**

Part-time applications: Please apply direct to Hull College

## Duration

1 year (full-time)

A part-time study mode is also available.

## Location

Hull School of Performance Arts

## Entry Requirements

Normally a HND, Foundation Degree or Higher Diploma

## The Course

The BA (Hons) Dance is a one year programme that can be undertaken after a HND or a Foundation Degree. It aims to provide the student with an opportunity to consolidate their skills, knowledge and understanding of dance through the creation and running of a third year dance company. In this final year of study emphasis is placed upon working in real working environments. Therefore, during the running of the company, opportunities to develop graduate skills in performance, teaching and choreography are at the forefront of the award. Students are also provided with the opportunity to gain a further City and Guilds teaching qualification. Many of the students progressing from this programme enter employment and currently are employed as teachers in Primary, Secondary and Further Education. The modules include Personal Professional Development (PPD) and Work Based Learning (WBL) which are delivered in both semesters and are focused upon experiential learning in the workplace. Other modules include: The Community Dance Practitioner, Research Project and Consolidating Technique.

## Progression

BA (Hons) Dance provides students with the opportunity for further study in the form of a post graduate degree, PGCEs and professional training or possibilities in the work place.

# Foundation Degree Broadcast Media

An award of Leeds Metropolitan University

Please apply via UCAS, code **P310**

## Duration

2 years (full-time)

## Location

Hull School of Performance Arts

## Entry Requirements

Normally successful completion of two A Levels or the EDEXCEL (BTEC) National Diploma is the normal requirement. Consideration will also be given based on previous experience.

## The Course

The course is for people who aim to become a professional practitioner in the media industry, and to gain a qualification that will be recognised and valued by employers. The course is broad based covering a wide range of vocational, theoretical and business related skills with the opportunity to study amongst an environment that reflects the true nature and ethos of the media industry.

## Progression

At the end of your study you will be able to continue with your education with a 'top-up' BA (Hons) Degree Broadcast Media, pursue a career in the Media Industry or consider other areas of employment.

# BA (Hons) Broadcast Media

An award of Leeds Metropolitan University

Please apply via UCAS code **P314**

## Duration

1 year (full-time)

## Location

Hull School of Performance Arts

## Entry Requirements

Normally you need to have completed two years of study at Higher Education level (level 4 and 5) in your specialist area.

## The Course

The BA (Hons) Broadcast Media is designed to meet the needs of those who are planning for a career in Broadcast Media. In order to fully grasp the breadth of opportunities and nature of this sector, media practitioners and regional media organisations have collaborated with the college and relayed their own experiences, market needs and levels of expectations which have formed the basis for the course. As such, the core theme throughout will be on the working fundamentals and practices, broadcast standards and regulations through to new developments and changes in Broadcast Media, all set within the purpose built Hull School of Performance Arts. As such, this course is grounded firmly within a vocational framework, enabling students to achieve their desired goals through a practical exploration. In addition to this, the BA (Hons) Top up in Broadcast Media allows for further opportunities in the associated media sectors and therefore other areas of media practices will be approached. Furthermore, the course will also include subjects to develop academic skills in the form of research methods and developing critical analytical skills through the preparation, development and completion of a dissertation.

### Semester 1 Modules:

- Entrepreneurial Practice
- Showcase management
- Industry practice
- Digital Media collaborative practice

### Semester 2 Modules:

- Final Major Project
- Dissertation
- Research methods

## Progression

This course aims to encourage employment within the media sector. This can come in the form of full time media employment or alternatively encourage students to be self employed and work as a freelance practitioner. This course also prepares students for post-graduate study.

# Foundation Degree Music Performance

An award of Leeds Metropolitan University

Please apply via UCAS, code **W312**

Part-time applications: Please apply direct to Hull College

## Duration

2 years (full-time)

3 years (part-time)

## Location

Hull School of Performance Arts

## Entry Requirements

A minimum of two A Levels or level three vocational qualification is normally required, equivalent to 200 UCAS points. The Foundation Degree in Music Performance serves as an internal progression route for existing students on BTEC National Diploma in Music Practice and also regionally, nationally and world wide. Mature students without relevant qualifications will be considered according to skills and experience.

## The Course

This award enables students to develop practical skills relating to music performance to a high level of proficiency. As well as practical skills, students will be taught academic, theoretical and transferable skills focussed on vocational employability in the music industry. Foundation degree Music Performance is delivered in practical and academic modules, in an environment that offers performance experiences relevant to current industry practices. The music events calendar offers performance opportunities in a diverse range of popular and historical genres. Work Related Learning is at the centre of the award, encouraging students to develop appropriate vocational skills through industry related projects. Students will have the distinct advantage of

working in their chosen specialist area developing practical skills with a range of internal and external practitioners. The programme will also create a synergy between the different specialist routes, producing high quality major performance productions to a professional standard. The Foundation Degree in Music adheres to 'widening participation'.

## Core Modules:

- Personal Professional Development 1 - 4
- Work Related Learning 1 - 4

## Subject Modules:

- Performance Musicianship
- Audio Recording
- Contemporary Musicianship
- Popular Music Performance
- Stylistic Performance
- Music Research
- Solo Performance Technique
- Popular Music Showcase

## Progression

Further study on the one year BA Honours Degree Music Performance at Hull College.

## Additional Information

You will require blank CDs and DVDs and a storage device (external hard drive) for backing up work. It is advisable to have a PC/Mac or laptop. You are expected to carry out research and practice in addition to timetabled hours. A bursary is available for students attending this course.





# BA (Hons) Music Performance

## An award of Leeds Metropolitan University

Please apply via UCAS, code **W313**

Part-time applications: Please apply direct to Hull College

### Duration

1 year (full-time)

A part-time study mode is also available

### Location

Hull School of Performance Arts

### Entry Requirements

Normally a HND, Foundation Degree or a HE Diploma. Mature students and students without relevant experience will still be considered according to skill and experience.

### The Course

This award enables the student to gain the specialist knowledge and skills required within practical roles relating to music performance on a personal and professional level. As well as performance skills, students will expand their theoretical, compositional and transferable academic skills in preparation for employment within the music industry or postgraduate study. The course is taught through practical and academic modules in an environment that offers performance experiences informed through research and development relevant to current industry practices. The award is diverse in its content concerning music performance as well as other areas of music practice relevant to performance. The broad based nature and music performance opportunities ensure that the student can specialise in the development of individual music skills, realising their potential and learning through challenging academic and practical work relevant to current practices. Students will have the distinct advantage of working in their chosen specialist area developing practical skills with a range of internal and external practitioners. The programme will also create a synergy between the different specialist routes, producing high quality major performance productions to a professional standard.

### Core Modules:

- Personal Professional Development 5 & 6
- Work Based Learning 5 & 6

### Subject Modules:

- Creative Musicianship
- Multi Media Performance
- Performance Recital
- Dissertation

### Progression

Students progress to many areas of the music and audio industry. The possibilities include specific specialist roles within the industry, session performer, arranger, producer/engineer, composer, balance engineer etc. There are also possibilities for self employment or freelance work. Students may also progress to undertake further study including PGCE and teacher training through the music department at Hull College, or study at masters level in a range of academic and practical music subjects.

### Additional Information

All BA music awards at Hull College involve 16 hours class contact each week. Whilst the learning is student focussed, lectures and workshops ensure an individual communication between staff and students allowing all learners to work to their particular strength on an individual basis. The course runs in the purpose built, professional facility at the Horncastle Building. The facilities include rehearsal rooms, recording studios, post-production rooms and audio suite running Pro Tools, Cubase, Logic and Sibelius. There is also a large selection of professional outboard equipment, plug-ins, hardware and microphones. Students have opportunities to participate in the running of a professional recording label which offers possibilities to source and distribute both student work and external artists.

# Foundation Degree Music Production

An award of Leeds Metropolitan University

Please apply via UCAS, code **WJ3X**

Part-time applications: Please apply direct to Hull College

## Duration

2 years (full-time)

A part-time study mode is also available

## Location

Hull School of Performance Arts

## Entry Requirements

Successful completion of two A Levels or BTEC National Diploma is normally required. The Foundation Degree in Music Production serves as an internal progression route for existing students on the BTEC National Diploma in Music Practice and also learners regionally, nationally and worldwide.

## The Course

This award enables the student to gain the knowledge and skills required within music production on a personal and professional level. As well as production skills, students will learn theoretical, compositional and transferable skills that will benefit their future employability within the music industry. The course is taught through practical and academic modules in an industry standard venue. The award is diverse in its content not only in music production but also within other areas of music. The broad based nature and music production opportunities ensure that the student not only realises their potential and learning in active project work but are also encouraged to develop appropriate skills which will benefit them for future employment. Students will have the distinct advantage of working in their chosen specialist area developing practical skills with a range of internal and external practitioners. The programme will also create a synergy between the different specialist routes, producing high quality major performance productions to a professional standard.

The Foundation Degree in Music Production adheres to 'widening participation' and progression opportunities for people within the City of Hull and from neighbouring educational establishments, which currently provide performing arts programmes up to entry levels for Foundation Degrees.

## Core Modules:

- Personal Professional Development 1 - 4
- Work Related Learning 1 - 4

## Subject Modules:

- Electronics and Computer Music
- Audio Recording
- Production Analysis and Re-creation
- Creative Composition
- Live Sound Production
- Acoustics
- Sound Design for AV
- Multi-Media/Web Design

## Progression

Further study on the BA (Hons) Music Production at Hull College.

Students also progress to many areas of the music and audio industry. The possibilities include specialist roles within the industry, session performer, arranger, producer/engineer, composer, balance engineer etc. There are also possibilities for self employment.

## Additional Information

A USB pen drive or portable hard drive would greatly assist the backing up of important data. You will occasionally require blank CDs, a storage device (floppy disks/pen drive/hard drive) and manuscript paper.

# BA (Hons) Music Production

An award of Leeds Metropolitan University

Full-time applications: Please apply via UCAS, code **WJ39**

Part-time applications: Please apply direct to Hull College

## Duration

1 year (full-time) or 2 years (part-time)

## Location

Hull School of Performance Arts

## Entry Requirements

Normally a HND, Foundation Degree or a HE Diploma

## The Course

This award provides the student with the practical techniques and theoretical knowledge needed to be a professional practitioner within the field of Music Production. The student will study a wide range of topics including composition, research, theory and transferable skills that will benefit their future employability. The advancement in, and increased availability of technology over recent years has required those wishing to enter music production to develop a creative outlook based on a thorough grounding of music and production techniques. The course is delivered in purpose built studios with industry standard equipment. Students take on the required roles within the specific module to enable a realistic working environment using external clients.

## Core Modules:

- Personal Professional Development 5 and 6
- Work Based Learning 5 and 6

## Subject Modules:

- Creative Music Technology
- Music for Product
- Production Portfolio
- Dissertation

## Progression

Students progress into many areas of the music and audio industry. The possibilities include specialist roles within the industry, session performer, arranger, producer/engineer, composer, balance engineer etc. There are also possibilities for self employment or further study.

# Faculty of Business and Science

Business and Professional Development

## Faculty of Business and Science

Hull College's Faculty of Business and Science incorporates courses in Business and Professional Development, Construction and Engineering, Social Care and Science, Sport and Travel and Tourism. The Faculty has a wide range of experienced tutors who have forged vital links within the various industry sectors.

The Business and Professional Development pathway offers everything from Business Management, Logistics, IT and Network Management courses to Professional Graduate Certificates in Education and Professional Management options.

The College's Construction and Engineering pathway is one of the largest providers of construction education and training in the region. Our workshops, range of programmes, and facilities are acknowledged to be amongst the best in the country including the state of the art Construction Centre of Excellence.

The Social Care and Science pathway offers an excellent range of courses and is the perfect starting point for young people and adults interested in a career in Health Care or Counselling. The School offers both full and part-time courses and many of our students progress to employment and Higher Education at Hull College and University.

Sports development and tourism are booming international industries offering exciting employment opportunities. The College enables students to gain professional expertise with opportunities to gain work based skills.

# Foundation Degree Business and Management

An award of Leeds Metropolitan University

Please apply via UCAS, code **N201**

## Duration

2 years (full-time)

## Location

The College's Queen's Gardens Centre

## Entry Requirements

Normally a Level 3 qualification or equivalent A Levels; IELTS level 6.0 for international students

## The Course

The Foundation Degree Business and Management has been developed with, and for, business. This Foundation Degree programme is aimed at those who aspire to management or enterprise in the future. Four modules will be studied per semester.

The modules are:

- Effective Learning
- Environment for Business
- Managing People
- Marketing Fundamentals
- Problem Solving and Decision Making
- Finance for Business
- Human Resource Management
- Stakeholder Relationships
- CPD and Personal Development
- Business Ethics
- Managing Operations
- Managing Across Cultures
- Employability Skills
- Business Research
- Business Planning
- Business Law

## Progression

Applicants with an appropriate Foundation Degree grade profile and successful interview may progress to the BA (Hons) Business and Management at Hull College. This requires a further 12 months of study.

# Foundation Degree Business and Management (Part-time)

An award of Leeds Metropolitan University

Please apply direct to Hull College

## Duration

2 years (part-time)

## Location

The College's Queen's Gardens Centre

## Entry Requirements

Normally applicants should have an appropriate level 3 qualification. Mature students with substantial relevant work experience will be considered. All applicants will be invited for an interview to discuss your application.

## The Course

This Foundation Degree Business and Management, awarded by Leeds Metropolitan University, is designed to develop the knowledge and skills required by those who already hold a management position or those who aspire to do so in the future. The course comprises of 16 modules. 4 modules will be studied per semester.

The modules are:

- Effective Learning
- Environment for Business
- Managing People
- Marketing Fundamentals
- Problem Solving and Decision Making
- Finance for Business
- Human Resource Management
- Stakeholder Relationships
- CPD and Personal Development
- Business Ethics
- Managing Operations
- Managing Across Cultures
- Employability Skills
- Business Research
- Business Planning
- Business Law

## Progression

Applicants with an appropriate Foundation Degree grade profile and successful interview may progress to the BA (Hons) Business and Management at Hull College. This requires a further 12 months of study.

# Foundation Degree Business and Management

An award of Leeds Metropolitan University

Please apply direct to Hull College

## Duration

1 year (part-time)

## Location

The College's Queen's Gardens Centre

## Entry Requirements

Normally a HNC Business or equivalent

## The Course

This is a one year top-up course from the HNC Business to convert this qualification into a Foundation Degree. You will study 6 modules during the year, which are:

- Managing Operations
- Business Law
- Managing Across Cultures
- Business Research
- Business Ethics
- Business Planning

## Progression

Applicants with an appropriate Foundation Degree grade profile and successful interview may progress to the BA (Hons) Business and Management at Hull College. This requires a further 12 months of study.

# BA (Hons) Business and Management

An award of Leeds Metropolitan University

Please apply direct to Hull College

## Duration

1 year (part-time)

1 year (full-time)

## Location

The College's Queens Gardens Centre

## Entry Requirements

Normally potential students must hold a level 5 qualification in Business and/or Management. Applicants with an appropriate grade profile from a relevant Foundation Degree will be considered.

## The Course

The BA (Hons) Business and Management is a one year programme, intended to consolidate previous HE study in this area and ensure students have the skills to identify, justify and deliver positive changes in any organisation, private and commercial, not for profit or public sector. All modules are delivered at level 6.

The modules covered are:

- Project Planning
- Effective Management Decisions
- Dissertation
- Leadership
- Strategic Management
- Developing Competitive Advantage
- Professional Practice and Enterprise.

## Progression

Holders of the BA (Hons) Business and Management may choose to progress their learning in a variety of ways, possibly seeking professional accreditation or further academic qualifications.

# Foundation Degree Computing: Business Information Technology

An award of Leeds Metropolitan University

Full-time applications: Please apply via UCAS, code **G500**

Part-time applications: Please apply direct to Hull College

## Duration

2 years (full-time) or 2 years (part-time)

## Location

The College's Queen's Gardens Centre

## Entry Requirements

Normally applicants should have an appropriate Level 3 qualification in Computing, or IT. Mature students with substantial relevant experience will be considered. When your application has been received you will be invited for a formal interview.

## The Course

The course is designed for those who need the skills and knowledge to manage technical staff as well as being able to liaise with directors and an understanding of IT within a business environment. The course content covers:

- Mark-up Languages for the Web
- Interactive Website Development
- Problem Solving and Decision Making
- Efficiency Through Technology
- Forecasting
- Project Management
- Effective Learning
- Database Management
- Systems Networking
- Social Networking
- The Potential of Technology
- Work Based Project
- Human Computer Interaction
- Using ICT to Analyse Information.

## Progression

Students could progress on to the full time BSc (Hons) Computing which is completed by successfully studying for one further year.

# BSc (Hons) Computing

An award of Leeds Metropolitan University

Full-time applications: Please apply via UCAS, code **G400**

Part-time applications: Please apply direct to Hull College

## Duration

1 year (full-time top-up) or 1 year (part-time top-up)

## Location

The College's Queen's Gardens Centre

## Entry Requirements

Normally a HND or Foundation Degree in appropriate subject with suitable grade profile and successful interview.

## The Course

This one year course allows applicants holding an appropriate computing related HND or Foundation Degree to top-up to a full BSc (Hons). All modules are delivered at Level 6.

The modules covered are:

- Natural and Artificial Intelligence
- Information and Society
- Systems Theory
- Digital Technology
- Dissertation
- Professional Practice and Enterprise

The course content examines the effects that computing and information have on information management, society and organisations. Students must also complete a dissertation/project.

## Case study

Michael completed his BSc (Hons) Computing in June 2010; previous to this he had also gained an FdSc Computing: Business Information Technology at the College. He studied for these qualifications while maintaining a job.

"The College is a great place to study and the fact that my course fitted into my working life was brilliant. I became quite close to the people on my course; we became a team. The course challenged me mentally, stretching boundaries of my own perception of ability and helped me to recognise my own strengths and weaknesses.

In the future I may wish to do a Masters Degree and I am also looking into the possibility of a new career in IT."

# Foundation Degree Computer Network Management

An award of Leeds Metropolitan University

Full-time applications: Please apply via UCAS, code **G420**

## Duration

2 years (full-time)

## Location

The College's Queen's Gardens Centre

## Entry Requirements

Normally applicants should have an appropriate Level 3 qualification in a relevant subject and GCSE Maths, grade C or above. Mature applicants with substantial relevant experience will be considered.

## The Course

This course is designed for Higher Education applicants wishing to enter ICT networking employment or progress to an Honours Degree programme. This is a two year full time course which will prepare you for the challenges and developments in the networking industry. There is a significant demand for people who can design, develop, implement and manage networked environments, therefore the course has been developed in consultation with key ICT contacts throughout the region so you will get relevant, career-focused training in a good range of networking areas.

This Foundation Degree covers the tools and practices used within industry, and will equip you with the practical and professional skills to work effectively in a range of career areas such as; specialist network design, corporate network security, network management and network administration.

The modules covered are:

- Security Systems
- The Role of Technology
- Manage ICT Service Provision
- Problem Solving and Decision Making
- Desktop Support Technician
- Efficiency through Technology
- Manage ICT Systems
- Project Management
- Developing Methodologies
- The Potential of Technology
- Switching
- Using ICT to Analyse Information
- Networking Infrastructure
- Work Based Project
- Routing

## Progression

Applicants with an appropriate Foundation Degree grade profile and successful interview may progress to the BSc (Hons) Computing at Hull College. This requires a further 12 months of study.



# BA (Hons) Education and Professional Development

An award of University of Huddersfield (Subject to Validation)

Please apply direct to Hull College.

## Course Length

3 years (part-time)

## Location

The College's Queen's Gardens Centre

## Entry Requirements

Normally applicants should have a Certificate in Education or its equivalent and the equivalent of two years full-time teaching experience (or part-time equivalent) or a comparable professional qualification and experience. Applications are also welcomed from potential students with five years experience, who do not possess a Certificate in Education or equivalent qualification.

## The Course

The course is designed to meet the needs of those wishing to access current educational philosophy and broaden their knowledge and understanding of practical, theoretical and policy issues including research methodologies in related areas. The course is also of value to those who are taking on greater responsibility as part of their professional role or career development.

This course is particularly suitable for those wishing to progress from a Certificate in Education. It features a combination of taught sessions that will take place on some Saturdays at regional centres and blended learning activities available online. Alongside this will be individual support from a college tutor.

Year one modules are:

- Advanced professional practice
- Improving teaching and learning
- Critical education

Year two modules are:

- Research methods
- Reflective professionalism and learning
- Major study

Modules are mainly assessed through a range of assignments, investigative reports and presentations.

## Progression

Successful completion of the BA (Hons) can lead to study for the MA in Professional Development, with its specialist routes in Post-Compulsory Education and Training and Basic Skills.

## Additional Information

The course is designed to meet the professional development needs of teachers or trainers in Further, Higher, Adult and Upper Secondary Education and those who work in related areas such as health, careers, police, uniformed services and private training organisations. The programme combines academic training with the development of key transferable skills to enhance intellectual independence and personal and professional effectiveness. The course is particularly suitable for those wishing to progress from a Certificate in Education to a degree. The course meets the requirements of CPD for members of the IfL but does not confer QTLS.

## Case study

Sefa studied for his BA (Hons) in Education and Training at Hull College. He chose the course because he felt it offered the best provision to suit his needs.

"My native language is Turkish and completing this degree in English was, at times, challenging but I received amazing support from my tutors and the degree has really helped me to progress my career. It has given me a deeper understanding of education and training. I intend to complete a Masters Degree in Education in the future and my biggest ambition is to improve and develop the ESOL (English for Speakers of Other Languages) provision in Hull."

# Certificate in Education

An award of Leeds Metropolitan University

Please apply direct to Hull College.

## Duration

A part-time course over 2 years

## Location

The College's Queen's Gardens Centre.

## Entry Requirements

To be accepted on the course you must be employed as a teacher/trainer in the post-compulsory sector and be contracted to teach a minimum of 150 hours (75 per academic year). Applicants must also hold (as a minimum) a level 3 qualification in the subject they teach.

## The Course

The programme is based on an analysis of the work of the teacher in post-compulsory education and training around the following broad themes:-

- Teaching, Learning and Assessment
- Curriculum Evaluation and Development
- Personal and Professional Development
- Development of subject-specialist teaching.

The programme is modularised – each module being awarded 15 CATS points with 120 CATS points being needed for the award of the certificate. The modules cover all the fundamental skills of teaching, the facilitation of learning and curriculum development. The course is assessed through a mixture of assignments and teaching practice relevant to your subject specialism.

Each module requires the submission of a portfolio of evidence demonstrating appropriate knowledge and understanding abilities along with evidence of practice. You must achieve a pass for all modules.

Trainees will attend one tutor-led group session a week where input will be organised to support their work on scheduled modules. There are significant additional requirements relating to tutorials with tutors and mentors as well as teaching practice.

## Progression

BA (Hons) Education and Professional Development



# Certificate in Education (Lifelong Learning)

An award of the University of Huddersfield

Please apply direct to Hull College.

## Duration

A part-time course over 2 years

## Location

The College's Queen's Gardens Centre

## Entry Requirements

To be accepted on the course you must be employed as a teacher/trainer in the post-compulsory sector and be contracted to teach a minimum of 150 hours (75 per academic year). Applicants must also hold (as a minimum) a level 3 qualification in the subject they teach.

## The Course

The programme is based on an analysis of the work of the teacher in post-compulsory education and training around the following broad themes:-

- Teaching, Learning and Assessment
- Curriculum Evaluation and Development
- Personal and Professional Development
- Development of Subject-Specialist Teaching

The programme is modularised. The modules cover all the fundamental skills of teaching, the facilitation of learning and curriculum development. The course is assessed through a mixture of assignments and teaching practice relevant to your subject specialism.

Each module requires the submission of a portfolio of evidence demonstrating appropriate knowledge and understanding abilities along with evidence of practice. You must achieve a pass for all modules.

One of the second year modules - Teaching a Specialist Subject, is delivered by the University. It requires attendance for two days at the University of Huddersfield at a Subject Specialist Conference, usually held during the week before Easter.

Trainees will attend one tutor-led group session a week where input will be organised to support their work on scheduled modules. There are significant additional requirements relating to tutorials with tutors and mentors as well as teaching practice.

## Progression

BA (Hons) Education and Professional Development

# Professional Graduate Certificate in Education

An award of Leeds Metropolitan University

Please apply direct to Hull College.

## Duration

A part-time course over 2 years

## Location

The College's Queen's Gardens Centre

## Entry Requirements

To be accepted on the course you must be employed as a teacher/trainer in the post-compulsory sector and be contracted to teach a minimum of 150 hours (75 per academic year). Applicants must hold a first degree in the subject they intend to teach.

## The Course

The programme is based on an analysis of the work of the teacher in post-compulsory education and training around the following broad themes:-

- Teaching, Learning and Assessment
- Curriculum Evaluation and Development
- Personal and Professional Development
- Development of Subject-Specialist Teaching

The programme is modularised – each module being awarded 15 CATS points with 120 CATS points being needed for the award of the certificate. The modules cover all the fundamental skills of teaching, the facilitation of learning and curriculum development. The course is assessed through a mixture of assignments and teaching practice relevant to your subject specialism.

Each module requires the submission of a portfolio of evidence demonstrating appropriate knowledge and understanding abilities along with evidence of practice. You must achieve a pass for all modules.

Trainees will attend one tutor-led group session a week where input will be organised to support their work on scheduled modules. There are significant additional requirements relating to tutorials with tutors and mentors as well as teaching practice.

## Progression

An appropriate post-graduate qualification.

# Professional Graduate Certificate in Education (Lifelong Learning)

An award of the University of Huddersfield

Please apply direct to Hull College.

## Duration

A part-time course over 2 years

## Location

The College's Queen's Gardens Centre

## Entry Requirements

To be accepted on the course you must be employed as a teacher/trainer in the post-compulsory sector and be contracted to teach a minimum of 150 hours (75 per academic year). Applicants must have a first degree in the subject they teach.

## The Course

The programme is based on an analysis of the work of the teacher in post-compulsory education and training around the following broad themes:-

- Teaching, Learning and Assessment
- Curriculum Evaluation and Development
- Personal and Professional Development
- Development of Subject-Specialist Teaching

The programme is modularised. The modules cover all the fundamental skills of teaching, the facilitation of learning and curriculum development. The course is assessed through a mixture of assignments and teaching practice relevant to your subject specialism.

Each module requires the submission of a portfolio of evidence demonstrating appropriate knowledge and understanding abilities along with evidence of practice. You must achieve a pass for all modules.

One of the second year modules - Teaching a Specialist Subject, is delivered by the University. It requires attendance for two days at the University of Huddersfield at a Subject Specialist Conference, usually held during the week before Easter.

Trainees will attend one tutor-led group session a week where input will be organised to support their work on scheduled modules. There are significant additional requirements relating to tutorials with tutors and mentors as well as teaching practice.

## Progression

An appropriate post-graduate qualification.

# Professional Graduate Certificate in Education

An award of Leeds Metropolitan University

Please apply direct to Hull College.

## Duration

A full-time course over one year.

## Location

The College's Queen's Gardens Centre

## Entry Requirements

A good degree (e.g. 2:1) and a relevant and strong history in your occupational field or vocational subject.

You will need to demonstrate the maturity, experience and life skills needed to fulfil a teaching and tutor role in Further Education. You should have sound organisational skills and be able to work well under pressure. Your communication, numeracy and ICT skills will be good. Offers to successful applicants will be dependent upon:

- A strong written application and successful interview
- Satisfactory references
- Satisfactory CRB checks
- Our ability to find a suitable teaching practice placement for you.

## The Course

The programme is based on an analysis of the work of the teacher in post-compulsory education and training. The programme is modularised – each module being awarded 15 CATS points with 120 CATS points being needed for the award of the certificate.

The modules cover all the fundamental skills of teaching, the facilitation of learning and curriculum development. The course is assessed through a mixture of assignments and teaching practice relevant to

your subject specialism. The input sessions will be held at the Hull College Queen's Gardens site and the teaching practice (minimum 150 hours over the year) will be held at an appropriate post compulsory education provider. For the teaching practice you will work alongside a host tutor and as part of a teaching team, gradually building up confidence and expertise. In addition to teaching duties you will be expected to carry out the normal day-to-day activities that College staff carry out (curriculum development, meetings, administration).

Each module requires the submission of a portfolio of evidence demonstrating appropriate knowledge and understanding abilities along with evidence of practice.

You must achieve a pass for all modules.

## Progression

An appropriate postgraduate qualification.

## Additional Information

The closing date for applications for a place in September 2012 is 31 March 2012.

Successful applicants may be entitled to a bursary to cover some of the tuition fees. This will depend on their subject specialism.

There are opportunities to achieve additional relevant qualifications alongside your PGCE (external examinations may apply here).



# Foundation Degree Ports and Logistics

An award of Leeds Metropolitan University

Please apply direct to Hull College

## Duration

2 years (part-time)

## Location

The College's Queen's Gardens Centre

## Entry Requirements

Normally applicants should have an appropriate level 3 qualification. Mature students with substantial relevant work experience will be considered. All applicants will be invited for an interview to discuss your application.

## The Course

The course is designed to qualify students to meet the needs of the industry and to enable employers to invest in their employees as a core strategy to developing their businesses.

Students will study modules including:

- Port Operational Management
- Management and Leadership for the Logistics Manager
- International Business
- Strategic Management for Business
- International Global Trade
- Port Operations
- Port Infrastructure Management
- Port Operations and Technology
- Multimodal Transport Operations and Policy
- Supply Chain Theory
- Introduction to Logistics
- Supply Chain Planning
- Port Operations Concepts and Issues
- Types of Logistics Organisation
- Port Improvement Project

## Progression

On successful completion, students will be able to top-up their Foundation Degree to a full Honours Degree with approximately a further 18 months of study.

Skills for Logistics have established a framework for career progression within the Logistics Sector entitled Stairway Interactive, details of which can be found at [www.thestairway.org](http://www.thestairway.org)

# Foundation Degree Express Logistics

An award of Leeds Metropolitan University

Please apply direct to Hull College

## Duration

3 years (part-time)

## Location

The College's Queen's Gardens Centre

## Entry Requirements

Normally applicants should have an appropriate level 3 qualification. Mature students with substantial relevant work experience will be considered. All applicants will be invited for an interview to discuss your application.

## The Course

The Degree is aimed at candidates holding middle management positions or those who aspire to do so in Express logistics and supply chain management. Particularly suitable for:

- Managers with Express logistics operational responsibilities.
- New managers and recent graduates without business related degrees who wish to work in the Express logistics industry.

This is a blended distant learning course. Each module is supported by a named tutor; there are also workbooks and face to face tutorials. In addition there will be online forums and learning activities. The programme will enable students to build their own learning network across the course to support collaborative learning.

The degree contains 16 modules:

### Level 4

- Study Skills
- Lean Operations
- Managing Information in Logistics Operations
- Introduction to Express Logistics
- Managing People in Express Logistics
- Managing Assets and Facilities in an Express Logistics Operation
- Principles of Project Management
- Managing Change

### Level 5

- Managing Activity in an Express Operation
- Supply Chain Planning
- Strategic Management for Business
- Research for the Vocational Manager
- Managing Compliance in Express Operations
- International Global Trade
- Improvement Project 1
- Improvement Project 2

## Progression

One year top up on a suitable Logistics Degree Course. Chartered Management Institute Level 7 Diploma in Strategic Management CILT offer various progression courses for successful candidates, including the CILT Advanced Diploma in Logistics, CILT Advanced Diploma in Transport, MSc Passenger Transport Management and MSc Logistics.



# CMI Level 5 NVQ Diploma in Management (QCF)

**Duration**

1 year

**Location**

Flexible

**Entry Requirements**

Participants will normally be either practising or aspiring operational managers. Although no previous formal qualifications are required to embark on the S/NVQ, participants will need to demonstrate management experience. There are no formal educational requirements but learners should have a background that will enable them to benefit from the programme.

**The Course**

This qualification is intended for the operational managers who:

- Have operational responsibility for programmes and resources
- Have a broad operational span of control
- Are responsible for identifying and implementing change and quality improvements
- Control budgets and contracts
- Lead meetings

**Progression**

An appropriate post-graduate qualification.

**Additional Information**

If you would like further information please contact us on:  
(01482) 598855.

# CMI Level 7 NVQ Diploma in Management (QCF)

## Duration

1 year

## Location

In the workplace and the College's Queens Gardens Centre

## Entry Requirements

Participants will normally be either practising or aspiring senior managers. Although no previous formal qualifications are required to embark on the S/NVQ, participants will need to demonstrate substantial management experience. There are no formal educational requirements but learners should have a background that will enable them to benefit from the programme.

## The Course

This qualification is intended for the senior manager/director who:

- Have operational/strategic responsibility for substantial programmes and resources
- Have a broad span of control
- Are responsible for identifying and implementing change and quality improvements
- Negotiate budgets and contracts
- Lead high level meetings.

## Progression

Upon successful completion of the Level 7 S/NVQ in Management, the following progression options become available:

- Enhance your professional status by becoming a Member (MCMI) of the Institute
- Start working towards Chartered Manager status
- Progress onto a masters, MBA or postgraduate programme at university.

Although S/NVQs are not credit rated like the Institute's certificates and diplomas, exemptions may be given through Accreditation of Prior Learning (APL).

## Additional Information

If you would like further information please contact us on: (01482) 598855.

# CMI Level 7 Diploma in Strategic Management and Leadership (QC)

## Duration

1 year

## Location

The College's Queen's Gardens Centre

## Entry Requirements

No formal qualifications required, however a pre course interview will be conducted.

## The Course

Senior managers/directors often have a broad span of control and have responsibility for negotiating contracts and budgets. This programme covers topics such as strategic planning and control, effective use of resources and performance management.

## Progression

Successful candidates may progress to the Executive MA with the Durham Business School.

## Additional Information

For information or to book a place, please contact: (01482) 598855.

# CIPD Diploma in Human Resource Practice

## Duration

1 year

## Location

The College's Queens Gardens Centre

## The Course

This qualification is intended for anyone working at the level of personnel assistant, personnel administrator or personnel officer, whose role is to provide support for key aspects of the personnel function. It is also relevant for someone new to, or aspiring to, a career in the personnel function, line managers, supervisors or team leaders or the owners or managers of small businesses. The course includes four modules:

- Human Resource Plans and Organisational Context
- Recruitment and Selection
- Training and Development Performance
- Management and Employee Relations.

## Progression

CIPD Professional Development Courses at the University of Lincoln

## Additional Information

If you would like further information please contact us on: (01482) 598855.



## Case study

### Andy - Construction

Andy first came to Hull College to do a HNC in Construction, and then progressed onto the Foundation Degree and finally the BSC in Construction. He believes that the range of options in his degree will help him in the workplace.

"It is great to be able to study, not only Construction, but the promotion opportunities in the industry as well. It has shown me that there are many different sides to the world of construction. Hull College is a great local resource and they have some excellent links with industry and employers which was a big attraction to me. The academic background I am gaining from studying at College is invaluable and I am also getting hands on practical experience through my placements on construction sites. In the future I want to keep progressing and furthering my career and I think studying at Hull College will definitely help me."

# BSc(Hons) Construction Management

An award of Leeds Metropolitan University

Please apply direct to Hull College

## Duration

2 years (part-time)

## Location

The College's Queen's Gardens Centre

## Entry Requirements

The award is open to students holding 240 credits from an appropriate award or awards. The decision to offer a place will be based on the applicant's education, industrial experience and demonstrable ability to study at level 6.

## The Course

The following units will be studied over two years.

- **Management and design**  
The module will build upon the student's previous project experience. New technologies and the changing requirements of low carbon construction will be incorporated in proposals which will permit the student to evaluate and justify arrangements.
- **Advanced Construction Technology**  
This module permits the student to review construction and building technology to a higher level and reflect on current developments in various aspects of the construction environment. The unit builds on knowledge from previous levels of study.
- **Project Planning**  
The module aims to develop an understanding of the importance of planning, monitoring, delivering and evaluating projects within the organisation.
- **PPD5**  
The purpose of this module is to enable students to acquire and develop a range of skills including transferable, personal, interpersonal, academic and subject specific skills that will enable them to succeed in their chosen field of study.
- **Strategic Management**  
The module is designed to provide students with a holistic view of the organisation and thus the ability to appreciate the importance of strategic decisions at all levels of the business organisation.
- **Environmental Construction**  
The purpose of this module is to introduce the student to the design, construction and operational management of technology systems incorporated in modern buildings. The module will develop a holistic approach to construction activity and its environmental impact.
- **Work based learning 5**  
The purpose of this module is to enable students to demonstrate achievement of the learning outcomes with reference to their organisational or professional context.
- **Specialist Study**  
This module aims to provide the learner with the opportunity to further develop independent learning skills and demonstrate their capacity for sustained individual effort and ability to analyse, synthesise and evaluate the data pertinent to the chosen research topic.

# Foundation Degree Construction Management

An award of Leeds Metropolitan University

Please apply direct to Hull College

## Duration

1 year (part-time)

## Location

The College's Queens Gardens Centre

## Entry Requirements

Normally a HNC in Construction from Hull College

## The Course

This is an opportunity to develop your existing HNC into a University award. Foundation Degrees are new awards offering personal professional development in a work related context. The course will enable you to extend your professional knowledge and expertise in the direction suiting your career plans and add to the capabilities of your employer. In the modules listed below you will find the flexibility to investigate, find and evaluate solutions to actual work related issues to benefit your employment. At the same time you will identify and address those next steps in your professional development. With this FdSc you might then progress to our 2 year, part time BSc Hons Construction Management here at Hull College.

Modules:

- **Work Related Learning 3 (Project Management)**  
enables you to develop and apply generic project management skills and IT techniques in a work related context.
- **Contractual Procedures** introduces the families of contracts used in construction and permits you to consider the suitability of each type in a variety of projects.
- **Personal Professional Development 3 (Surveying)** enables you to augment the skills and knowledge which you acquired at Level 3 to a level appropriate to your professional activities and progression.
- **Sustainable Construction** will introduce you to environmental issues such as passive design and solar energy which are increasingly important in construction.
- **Work Related Learning 4 (Individual Project)** permits you to choose a project from your workplace, investigate solutions and present an appropriate solution.
- **Personal Professional Development 4 (measuring, estimating and tendering)** enables you to develop skills and knowledge acquired at level 3 based on your working experience and to further identify those skills which you judge to be appropriate to your career development.

## Progression

The award offers progression to BSc (Hons) Construction Management at Hull College.



# BTEC HNC Diploma Construction and the Built Environment

Please apply direct to Hull College

## Duration

2 years (part-time, day release)

## Location

The College's Queen's Gardens Centre

## Entry Requirements

The entry profile for learners who have recently been in education is likely to include one of the following:

- A BTEC Level 3 qualification in Construction and the Built Environment
- A GCE Advanced level profile which demonstrates strong performance in a relevant subject or an adequate performance in more than one GCE subject. This profile is likely to be supported by GCSE grades at A\* to C
- other related level 3 qualifications
- An Access to Higher Education Certificate awarded by an approved further education institution
- Related work experience.

Mature learners may present a more varied profile of achievement.

## The Course

The HNC gives you the opportunity to continue your studies within the construction industry to a Higher Education level. The qualification is an Edexcel (BTEC) HNC, which is nationally recognised amongst the Construction Industry. It gives you the opportunity to do more in-depth investigation and analysis on a broad range of construction related topics. It is primarily aimed at individuals working within the industry, that are currently in technician positions or looking to move

away from tools. The qualification, due to the broad range of subjects offered, is aimed at all technician roles. It also allows you to step closer towards a degree or CIOB qualifications (with some exemptions available).

The course will study the following units over two years:

- Design Principles and Application
- Science and Materials
- Analytical Methods
- Health and Safety
- Group Project
- Management Principles and Application
- Building Control Procedures
- Building Services Design
- Installation and Maintenance
- Construction and Maintenance of Buildings
- Site Surveying Procedures

Each unit is assessed separately and is structured using the following: A minimum of two (two is the usual, however some subjects have up to four) set assignments assessed by the tutor. End of Unit Exam (this varies in format and could be closed or open book) assessed by the tutor. An external moderator then confirms or adjusts the marks accordingly.

## Progression

Through a Foundation Degree top up to BSc (Hons) Construction Management at Hull College.

# Foundation Degree Construction Project Management

**An award of Leeds Metropolitan University**

Please apply direct to Hull College

## **Duration**

3 years (part-time day release)

## **Location**

The College's Queen's Gardens Centre

## **Entry Requirements**

Normally a NVQ3 and/or appropriate equivalent experience. Students will usually be employed in an appropriate sector.

## **The Course**

The Foundation Degree in Construction Project Management is an award of Leeds Metropolitan University and will be delivered at Hull College on a part-time basis, normally three years in duration. The course will be structured over two levels and will cover a range of modules including:

Level 4:

- Health and Safety
- Building Law
- Managing and Communicating with Teams
- The Construction Process
- Construction Technology
- IT for Construction and Financial Management
- Building Services Engineering
- Sustainable Construction and the Environment

Level 5:

- Contractual Procedures
- Supply Chain Management
- Applying Sustainable Construction Technologies
- Construction Project Management
- Work Based Learning Project/Disseration

## **Progression**

The programme offers progression to BSc (Hons) Construction Management at Hull College.

# Foundation Degree Automotive Technology

**An award of Leeds Metropolitan University**

Please apply direct to Hull College

## **Duration**

3 years (part-time)

## **Location**

The College's Cannon Street Centre

## **Entry Requirements**

Normally a Level 3 Light or Heavy Motor Vehicle or Level 4 Master technician qualification or its equivalent.

## **The Course**

The course consists of 16 modules, which are derived from technical aspects building upon the application of knowledge and skills used within the motor vehicle industry. The course also includes specialist areas of mentoring and management throughout the Degree, further transferable skills are developed, encouraging initiative and creativity from the learner and the application of these skills into a managing role of modern day workplace. The course includes the following:

- Chassis Systems
- WBL1 Communication in the Organisational Environment
- Engine and Transmission Technology
- Vehicle Electrical, Electronic and Communication System
- (PPD1) Personal Support and Supervision
- (PPD2) Advanced Diagnostic Techniques
- WBL2 Operation Management and the Control of Inventory
- Transport Engineering
- Quality Control and Improvement
- Management Theory
- Performance, Changes in Transport and the Environment
- (WBL3) Project Planning and Management
- (WBL4) Individual Student Project
- Personal Professional Development 3 and 4
- Law for the Motor Trade (optional)
- Business Finance (optional)

## **Progression**

Students would normally be eligible to progress to top up BSc (Hons) Transport Management from Bolton University.



# Foundation Degree Engineering Technology

## An award of Leeds Metropolitan University

Full-time applications: Please apply via UCAS, code **H100**

Part-time applications: Please apply direct to Hull College

### Duration

1 year top-up

2 years (full-time) or 3 years (part-time)

### Location

The College's Queen's Gardens Centre

### Entry Requirements

Normally a National Certificate in Engineering or an Engineering Science based A-Level or a one year HNC. Applicants will be invited to a brief interview with the course tutor.

### The Course

Foundation Degrees are new, innovative degree level qualifications designed with employers, so they fit perfectly into the world of work. Designed for those working in a technical position within the local industry involved in design or manufacturing. A significant proportion of study is devoted to work-based learning, i.e. developing solutions to 'real' problems in the work place.

#### Mandatory Modules

- Engineering Mathematics (top-up only)
- Mathematics 1
- Mathematics 2
- Mathematics 3
- Mechatronics 1
- Mechatronics 2
- Science for Engineers 1
- Science for Engineers 2
- Personal and Professional Development 1
- Personal and Professional Development 2
- Personal and Professional Development 3
- Personal and Professional Development 4
- Work Based Learning 1
- Work Based Learning 2
- Work Based Learning 3
- Work Based Learning 4

#### Optional Modules:

- Parametric Engineering Design
- Mechatronics 3 / Mechatronics (top-up only)

### Progression

Candidates who are successful in attaining this award can proceed to the BEng (Hons) Engineering Technology or an equivalent award.

# BEng (Hons) Engineering Technology

## An award of Leeds Metropolitan University

Please apply direct to Hull College

### Duration

18 months part-time Foundation Degree Top-up.

### Location

The College's Queen's Gardens Centre

### Entry Requirements

Normally a Foundation Degree Engineering Technology or equivalent.

### The Course

This course has been designed in conjunction with employers to meet the needs of industry in an ever changing environment, providing students with the opportunity to develop their studies around their work place or technical expertise.

#### Mandatory Modules:

- Applied Engineering Mathematics
- Group Working
- Research Methods
- Project Planning
- Project Implementation

#### Optional Modules:

- Advanced Parametric Engineering Design (Mechanical)
- Industrial Control Systems (Electrical)
- Structural Analysis and Design (Mechanical)
- Electrical Power Systems (Electrical)

### Progression

Professional qualification e.g. CEng.



## Case study

### Wendy – Counselling Practice

Wendy came to Hull College as a mature student and enrolled on the BA (Hons) Counselling Practice. She graduated in October 2011 and is now working as a Counsellor.

"I first looked at the College because it is a fantastic local resource; everyone is so welcoming and friendly and really put me at ease. The tutors were so supportive, I can honestly say that coming to Hull College is one of the best things I have ever done. The College gave me the opportunity to start a new career – I am now doing something I love and have to pinch myself every morning. I am now hoping to enrol on another course at Hull College!"

# BA (Hons) Counselling Practice

An award of Leeds Metropolitan University

Please apply via UCAS, code **B940**

Part-time applications: Please apply direct to Hull College

## Duration

1 year full-time (1.5 days per week)

A part-time study mode is also available

## Location

The College's Queen's Gardens Centre

## Entry Requirements

Candidates should: Hold a professional qualification in Counselling and be educated to Level 5 in Counselling, e.g. FD in Counselling/Counselling Practice; Be practicing as a counsellor; Be a BACP Member; Have completed an enhanced CRB check; Successfully pass an individual interview.

## The Course

This course forms a top-up Degree for those who have already got a FD in Counselling/Counselling Practice or an equivalent qualification. The model of counselling underpinning this course is integrative humanistic.

The Programme consists of 7 modules:

1. Personal Professional Development 5
2. Personal Professional Development 6
3. Dissertation Module
4. Counselling Theory: The Humanistic Approach
5. The Counselling Relationship and Therapeutic Use of Self
6. Key Issues in Counselling Practice
7. Specialist Practice in Counselling

Its main aims are to support qualified counsellors who wish to continue their professional development and/or to support those working towards accreditation.

The course will involve:

- Seminars
- Workshops
- Skills Practice
- Student Presentations
- Dissertation Research
- Independent Study into Specialist Areas
- Group Supervision

## Progression

Upon successful completion of the BA (Hons), students may wish to progress to a Masters level course in the Yorkshire region. As a result of the programme, students may choose to apply to the BACP to become accredited. NB The course only supports students towards accreditation.

## Additional Information

Students should contact Student Support Services (tel. 598942) for information on financial help available with tuition fees and the cost of studying. Additional Costs: Students are required to have individual supervision of 1 hour to every 6 client hours.

# Foundation Degree Working with Young People

An award of Leeds Metropolitan University

Please apply direct to Hull College.

## Duration

3 years Part-time

## Location

The College's Queen's Gardens Centre

## Entry Requirements

Normally students applying for this programme would have a level 3 qualification in Health Care, Youth work or Psychology and a GCSE English or equivalent. They should have at least 2/3 years experience (paid or unpaid) working in an FE, youth or secondary school setting. Mature students with no formal qualifications but considerable experience in a relevant field will be considered on an individual basis.

## The Course

The Foundation Degree is designed to provide an opportunity for people working with teenagers or young adults to obtain qualifications in the field. The award aims to develop your background knowledge, research and academic skills, as well as providing a forum for case study and exploration of the issues which are critical to this area of work. The opportunity will be available to develop projects based on your working experiences and to relate your study directly to your working experiences.

Areas of study include:

- Personal and Professional Development
- Work-related Learning
- Social Policy
- Life Course Development
- Working for Change with Young People
- Youth Participation and Citizenship
- Equality and Diversity
- Research Techniques
- Contemporary Issues

## Progression

Progression routes will be available to Honours Degrees at Leeds Metropolitan University. Future development in this pathway may include a full BA Top-up degree at Hull College.

## Additional Information

A clean CRB check is required

# Foundation Degree Young Children's Learning and Development

An award of Leeds Metropolitan University

Please apply direct to Hull College

## Duration

3 years (part-time)

## Location

Hull and Goole campus

## Entry Requirements

Normally students applying for this programme should hold a Level 3 Child Studies qualification and a GCSE in English or equivalent, and have a minimum of two years post qualifying experience. Mature students with no formal qualification but with experience working in an Early Years setting may apply.

## The Course

This sector-endorsed Foundation Degree is designed for those working or planning to work in a supervisory position within the Early Years Sector. Students will need a 'critical friend' within the workplace, and evidence of a recent CRB police check.

## Progression

Successful holders of the Foundation Degree will be awarded 240 credits. 120 credits will be achieved at Level 1 and a further 120 credits at Level 2. There are arrangements for progression onto BA (Hons) Young Children's Learning and Development. Other progression routes, both part-time and flexible, on to early years teaching degrees are available (subject to statutory requirements). As a senior practitioner you will be working towards supervisory status within your setting. Having completed the Foundation Degree, further opportunities could develop to work towards achieving the Early Years' Professional Status.

## Additional Information

A clean CRB check is required



# BA (Hons) Young Children's Learning and Development

An award of Leeds Metropolitan University

Please apply direct to Hull College

## Duration

18 months (part-time)

## Location

The College's Queen's Gardens Centre

## Entry Requirements

Normally learners applying for this programme should hold a relevant level 5 qualification, such as the Foundation Degree in Young Children's Learning and Development or the Foundation Degree in Early Years.

## The Course

The BA top up in Young Children's Learning and Development has been validated by Leeds Metropolitan University. The BA top up provides a continuous progression for most students studying on the Foundation Degree Young Children's Learning and Development, enabling them to complete their honours degree in 3 semesters part time. Students who have completed a similar Foundation Degree will also be considered for this route. Assessment is built around reflection and reflective practices. This involves the development of observational skills that enable the Early Years' Practitioner to adapt current theory and thinking to meet the needs of the child. Coursework is continuously assessed through assignments, essays, presentations, reflective practice journals, portfolios and a work based dissertation. This BA top up is designed for those working or planning to work in a leading position within the Early Years' Sector. The course is designed to build academic understanding, developing knowledge of child development and educational theory; an understanding of the complex and conflicting theories, concepts and principles

relevant to the subject area of Early Childhood Studies. The programme structure includes:

- Personal and Professional Development
- Young Children as Learners
- Quality Provision for Early Learning
- Young Children's Health and Safety
- Young Children as Creative Thinkers
- Professional Dimensions of Working with Young Children
- Dissertation

Learners will need a Mentor within the workplace to offer support and guidance throughout the course. Learners will need evidence of a recent CRB police check. It is expected that learners on this programme will be employed within an early years' setting for a minimum of 10 hours per week for the duration of the course in either a paid or voluntary capacity.

## Progression

Successful holders of the Foundation Degree will be awarded 240 credits. 120 credits will be achieved at Level 4 and a further 120 credits at Level 5. Successful completion of the BA (Hons) top up in Young Children's Learning and Development provides a further 120 credits at level 6. (Subject to statutory requirements). As a lead practitioner you will be working towards graduate status within your setting. Having completed the BA top up further opportunities could be accessed through a variety of identified routes to work towards achieving the EYPS (Early Years' Professional Status) or QTS (Qualified Teacher Status).

## Additional Information

A clean CRB check is required





## Case study

### **Kaitlin** - Criminology

Kaitlin, originally from Hungary, speaks English as a second language and has managed to study for her Foundation Degree at the same time as learning English.

"My time at the College has been really interesting, I have had to juggle responsibilities at home in the UK and frequent visits to my family in Hungary but I am so proud to have successfully completed my first year with excellent results – I have worked really hard! I am really looking forward to the future!"

# Foundation Degree Sport Studies

An award of Leeds Metropolitan University

Please apply via UCAS, code **C600**.

## Duration:

2 years (full-time)

## Location:

The Learning Zone at the Kingston Communications Stadium

## Entry Requirements

Normally applicants should possess GCSE English and Maths, or equivalent at grade C or above and one of the following: 3 A Level passes, A National Diploma in a related subject area, or an AVCE in a related subject: 140 points on the UCAS tariff. Mature students will be considered with appropriate work experience and a proven commitment to this level of study, you may be required to complete a pre-entry coursework assessment.

## The Course

The aim of this programme is to provide opportunities for learners to achieve a nationally recognised Foundation Degree qualification. To develop the knowledge, understanding and skills that enable progression within specific employment areas in the Sport and Exercise Science Industry or onto higher level qualifications such as a further top up year at University. There is also an opportunity to develop a range of skills and techniques essential for successful performance in working life, through the completion of relevant work based learning experiences, for example;

PE departments, sports development community programmes and the generic fitness industry. This course is divided into 2 years:

### Year 1

- Applied Sports Coaching
- Treatment and Rehabilitation of Sports Injuries
- Anatomy, Physiology and Biomechanics
- Sports Development and Special Populations
- Personal Professional Development
- Work Based Learning

### Year 2

- Fitness Training Principles
- Sport and Exercise Psychology
- Skill Acquisition and Motor Control
- Physical Education
- Advanced Personal Professional Development
- Advanced Work Based Learning

## Progression

The course aims to enable students to secure employment in the Sports Industry, or to continue their education by progressing to a top-up degree at a University.

## Additional Information

The course will be a mixture of physical activities, classroom based delivery and industrial experiences.





# Foundation Degree Travel and Tourism Management

## An award of Leeds Metropolitan University

Please apply via UCAS, code **N800**.

### Duration

2 years (full-time)

### Location

The College's Queens Gardens Centre

### Entry Requirements

Normally applicants should possess one of the following; three A Level passes or a National Diploma in a related subject area at PPP, AVCE Double Award at DD. (Total UCAS points 120). Mature students will be considered and invited for an informal interview.

### The Course

The Foundation Degree Travel and Tourism Management aims to provide students with a high quality course on which they will have the opportunity to develop knowledge and expertise of travel and tourism management and develop a range of personal attributes, including the ability to communicate effectively, develop ideas and deal with change. It will enable students to gain an understanding of the knowledge needed for decision-making in travel and tourism; an appreciation of the philosophies and basic concepts of the travel and tourism industry; a wide range of competencies and skills which will enable them to operate effectively within the travel and tourism industry and to develop a flexible and creative approach to problem solving. Work related learning forms a very important part of the teaching and learning experience.

### Year 1

#### Semester 1

- Personal Planning Development (PPD) 1
- Work Related Learning (WRL) 1
- Organisational Behaviour
- Travel Destinations

#### Semester 2

- Personal Planning Development (PPD) 2
- Work Related Learning (WRL) 2
- Travel Operations
- The Tourism Industry

### Year 2

#### Semester 1

- Work Related Learning (WRL) 3
- Personal Planning Development (PPD) 3
- Marketing
- Special Interest Tourism

#### Semester 2

- Personal Planning Development (PPD) 4
- Work Related Learning (WRL) 4
- Conference and Event Management
- Tourism Planning and Environment

Personal Planning and Development 1-4 includes study skills, Investigative Techniques, Project and Career Development for Travel and Tourism.

### Progression

The course aims to enable students to secure a management position in the tourism industry or to continue their education by progressing to the third year of a degree course at Leeds Metropolitan University.

# Foundation Degree Crime and Community Safety

An award of Leeds Metropolitan University

Please apply via UCAS, code **LL53**

## Duration

2 years (full-time)

## Location

The College's Queens Gardens Centre

## Entry Requirements

Normally two A levels, a BTEC National Diploma, or equivalent level 3 qualification (120 points on the UCAS tariff).

Mature students will be considered with appropriate work experience and a proven commitment to this level of study. You may be required to complete a pre-entry course assessment.

## The Course

The Foundation Degree in Crime and Community Safety is appropriate for students over 18 years of age looking to enter a career in a vast range of options within criminal justice and community organisations, e.g. police force, courts, probation service, prison service, youth justice and other related law enforcement agencies. This qualification is ideal for those students who want to gain a high level qualification and enhance employability. Its design and content have been made in conjunction with employers and links academic theory to practice. The Foundation Degree in Crime and Community Safety will give you a range of practical, academic, creative, managerial

and technical skills. You will cover a broad range of perspectives, and be involved in researching current, local and national policy as it affects people, communities and organisations. You will participate in a local community safety project in addition to having opportunities to gain employability skills through work placements. Modules will examine crime detection, prevention, safety, victim support and welfare, offender management and punishment.

Year one modules will include:

- Personal Professional Development
- Researching Crime and Community Safety
- Work Related Learning
- Foundations of Criminology
- Policing the Community
- Crime and Community
- Criminal Justice System

Year two modules will include:

- Teamwork and Leadership Skills
- Multi-Agency Working
- Work Related Learning
- Criminology and Contemporary Issues
- Crime and Punishment
- Crime Prevention and Community Safety
- Young People and Crime

## Progression

Progression is available to the BA (Hons) Criminology at Hull College.



# Foundation Degree Criminology with Applied Social Science

## An award of Leeds Metropolitan University

Full-time applications: Please apply via UCAS, code **L390**

Part-time applications: Please apply direct to Hull College

### Duration

2 years (full-time)

3 years (part-time)

### Location

The College's Queen's Gardens Centre

### Entry Requirements

Candidates will normally hold at least 120 UCAS points. Candidates without these qualifications but with experience in the sector and an aptitude for study at this level may also apply. Full-time learners should apply through UCAS. Part-time learners will normally be expected to be in suitable employment. You should apply directly to the College and will be invited for an informal interview where your situation will be considered on an individual basis.

### The Course

A multi-disciplinary approach is offered to the study of crime - its causes, social construction, impact and control. The skills and approaches to the study of crime adopted by the lawyer, the psychologist and the sociologist will be examined. Considerable emphasis is placed on personal professional development - with a focus on developing the skills of the

criminologist, social scientist and professional practitioner in this area. The Work Related Learning aspect of the programmes include placements in the Criminal Justice System so as to encourage development of an understanding of the agencies of the criminal justice system, of crime policy, and of the challenges facing both. Multi-agency issues and interaction are examined, but students are also given the opportunity to focus on issues directly relevant to their current or intended area of employment.

Core Modules studied:

- Personal and Professional Development
- Work Related Learning
- Criminology and the Social Sciences
- Sociology and the Study of Crime and Deviance
- Law and Criminal Justice
- Psychology and the Study of Criminal Behaviour
- Law Enforcement, Punishment and the State
- Criminality and Victimisation in Modern Britain

### Progression

Progression is available to the BA (Hons) Criminology, validated by Leeds Metropolitan University.

# BA (Hons) Criminology

## An award of Leeds Metropolitan University

Full-time applications: Please apply via UCAS, code **M9L3**

### Duration

1 year (full time)

### Location

The College's Queen's Gardens Centre

### Entry Requirements

A relevant Foundation Degree or 240 credits from an appropriate award or awards. Applicants may be required to attend an interview.

### The Course

The aim of the programme is to ensure that students are equipped with the knowledge and skills to pursue a career in the vast range of options within criminal justice agencies and community organisations. Careers, prospective students may be interested in could include working for the courts, probation, police, immigration service, working with young offenders or working in supporting roles in a wider range of fields such as homelessness, refugee work, victim support, or working with voluntary or community organisations.

The overall philosophy of this programme is to give students a critical understanding and appreciation of the nature of criminological knowledge and the opportunity to develop that understanding by drawing from a range of human and social science disciplines. The BA (Hons) Criminology will give students a range of practical, academic, creative, managerial and technical skills.

The programme is made up of seven modules and is designed to allow students to research into particular areas of criminology. The modules include a dissertation module which will enable students to enhance skills of personal organisation and independent learning, primary and secondary research skills, critical thinking and reflective skills. These are transferrable skills for careers and lifelong learning. Other modules include:

- Research Skills & Reflective Practice
- Criminal Justice – Principles & Challenges
- Theorising about Crime: Postmodernism
- Gender, Ethnicity & Crime
- Violence and Crime
- 21st Century Crime: New Threats, New Strategies





#### **A The Queen's Gardens Centre**

The College's largest site includes the impressive Horncastle building, Chesters building and the Maxwell Bird building. Here you will find facilities for Media, Music and Performing Arts, including a 200 seat working theatre that hosts performances for students and the public throughout the year.

The Energy and Climate Centre and the Construction Centre of Excellence at Queen's Gardens offers professional construction, renewables and architecture programmes and business facilities.

#### **B The Hull School of Art & Design**

The Hull School of Art and Design is situated at both the Park Street (B) and the Queen's Gardens (A) sites. The Hull School of Art & Design site at Queen's Gardens is a first choice environment for embracing a vast selection of creative disciplines. Facilities include specialist studios, editing suites, with the latest in production equipment.

#### **C The Learning Zone**

Based within the prestigious Kingston Communications Stadium, home of Hull City - and Hull FC. It has fantastic learning facilities for full-time sport and leisure courses. The Learning Zone also includes a public library, run in partnership with Hull City Libraries, with Internet access, a café and the popular Scholars Gym and Studio.

#### **D Cannon Street**

The Cannon Street Centre, close to the Queen's Gardens Campus offers automotive training at a HE level within a purpose built facility for motor vehicle studies.

#### **E Goole College**

Goole College now offers a Foundation Degree Young Childrens Learning and Development, for further details please check the website [www.goole-college.co.uk](http://www.goole-college.co.uk)

- Harrogate College, part of the Hull College Group also offers Higher Education courses. Please ask for a copy of the Harrogate College Higher Education course guide for more information.

### **Hull College**

Queen's Gardens

Hull HU1 3DG

**Tel:** (01482) 598744

**E-mail:** [info@hull-college.ac.uk](mailto:info@hull-college.ac.uk)

**Web:** [www.hull-college.ac.uk](http://www.hull-college.ac.uk)

### **Harrogate College**

Hornbeam Park

Harrogate HG2 8QT

**Tel:** (01423) 879466

**E-mail:** [oncourse@harrogate.ac.uk](mailto:oncourse@harrogate.ac.uk)

**Web:** [www.harrogate.ac.uk](http://www.harrogate.ac.uk)

### **Goole College**

Boothferry Road

Goole DN14 6SR

**Tel:** (01405) 762420

**E-mail:** [gooleinfo@hull-college.ac.uk](mailto:gooleinfo@hull-college.ac.uk)

**Web:** [www.goole-college.co.uk](http://www.goole-college.co.uk)



### **Mixed Sources**

Product group from well-managed  
forests and other controlled sources  
[www.fsc.org](http://www.fsc.org) Cert no. SGS-COC-004345  
© 1996 Forest Stewardship Council

All details are correct at time of press